



**Lockport-Batavia Line #112
Rebuild Project**

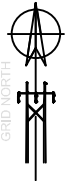
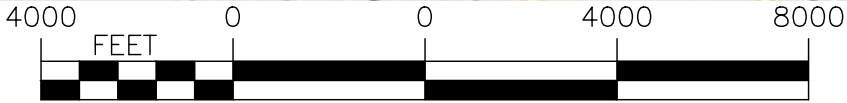
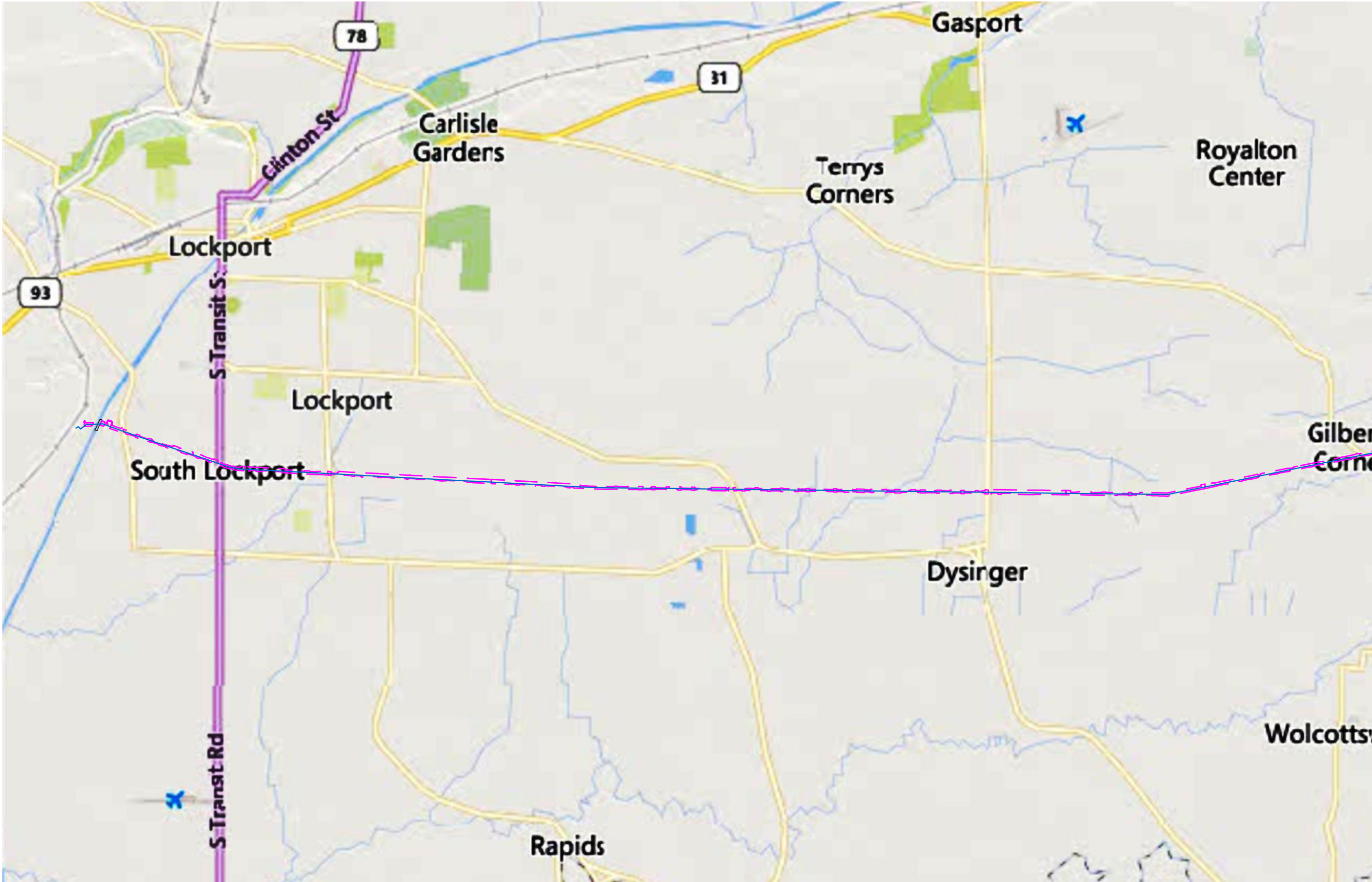
Appendix Z
Grading Plans

<u>SHEET NUMBER</u>	<u>TITLE</u>
GP-01	COVER SHEET
GP-02-03	SHEET INDEX
GP-04	GRADING DRAWING INDEX
GP-05	LEGEND NOTES
GP-06	GRADING PLAN DETAILS
GP-07-10	GRADING PLANS

GRADING PLANS

ISSUED FOR PERMITTING

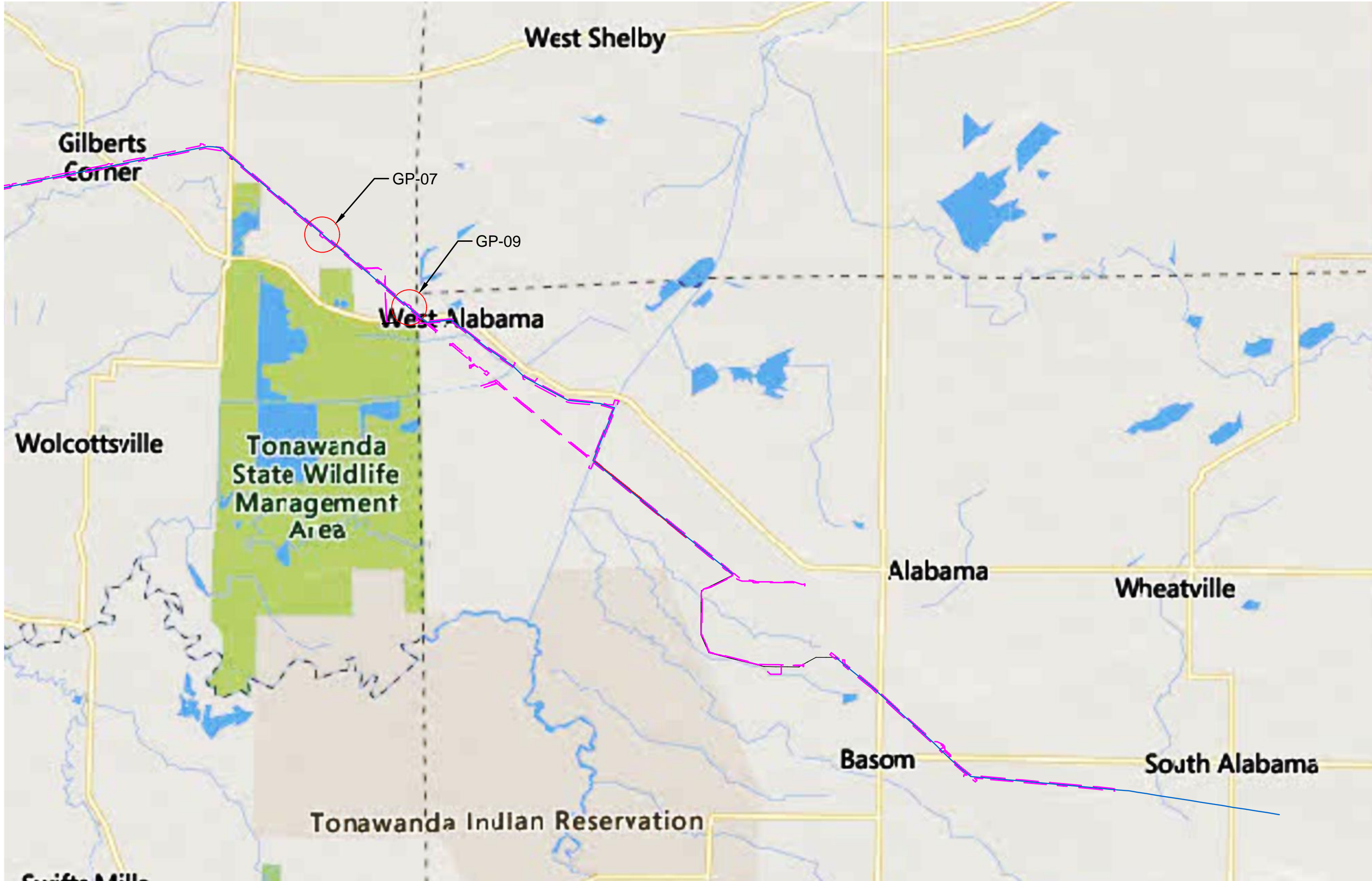
[illegible]



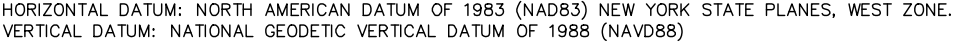
TO SHEET INDEX B

GRADING PLAN		ISSUE DATE	6/06/25
LOCKPORT-BATAVIA 112		FILE INDEX	6.1-L10-M5
REBUILD PROJECT		DRAWING NUMBER	L1-41568
SHEET INDEX A		SHEET NUMBER	GP-02
nationalgrid		PREPARED BY	
	DIS.	APPROVED H.P.	FISHER
	DR.	APPROVED	RW/VL
	CK.	APPROVED	RW/VL
	APP.	APPROVED	RW/VL
NO.	DATE	DISCUSSION OF ISSUE OR REVISION	

TO SHEET INDEX A



GRADING PLAN		ISSUE DATE	6/06/25
LOCKPORT-BATAVIA 112		FILE INDEX	6.1-L10-M5
REBUILD PROJECT		DRAWING NUMBER	L1-41568
SHEET INDEX B		SHEET NUMBER	GP-03
PREPARED BY		APPROVED H.P.	
		FISHER	
		APPROVED RW/VL	
		APPROVED RW/VL	
		DISCUSSION OF ISSUE OR REVISION	
		NO.	DATE
		DR.	CK.
		APP.	

[illegible]

NOTES:

1.

EROSION AND SEDIMENT CONTROL MEASURES TO BE UTILIZED ARE INCLUDED IN THE EM&CP DRAWINGS AND THE PROJECT STORMWATER POLLUTION PREVENTION PLAN (SWPPP). IN THE CASE OF CONFLICTS, THESE PLANS AND DIRECTION PROVIDED BY THE ENVIRONMENTAL MONITOR GOVERN.
- 1.1.

SLOPES UP TO 3H:1V SHALL RECEIVE TOPSOIL (APPR. 3”-4” MIN.) SEED, AND MULCH, AND BE STABILIZED WITH EROSION CONTROL BLANKET.
- 1.2.

SLOPES FROM 3H:1V TO 2H:1V SHALL RECEIVE TOPSOIL 1.2. (APPR. 3”-4”) AND BE STABILIZED WITH HYDROSEED/HYDROMULCH.
- 1.3.

SLOPES STEEPER THAN 2H:1V SHALL BE STABILIZED WITH RIPRAP.
2.

FILTER BARRIERS APPROVED FOR USE INCLUDE SILT FENCE, COMPOST FILTER SOCKS, AND STRAW BALES. CONTRACTOR MAY SELECT METHOD UNLESS DIRECTED OTHERWISE BY THE ENVIRONMENTAL MONITOR.
3.

UNLESS INDICATED OTHERWISE, REFER TO THE LATEST EDITION OF THE "NEW YORK STATE DEPARTMENT OF TRANSPORTATION STANDARD SPECIFICATIONS" FOR GENERAL REQUIREMENTS, PRODUCTS, AND EXECUTION RELATED TO CONSTRUCTION OF, BUT NOT LIMITED TO, GRUBBING, ROADS, BORROW, SUBGRADE, SUBBASE, GRANULAR FILL, AND AGGREGATED BASE.
4.

RESTORATION OF GRADED AREAS: WHERE GRADING HAS OCCURRED, ALL AREAS WILL BE RESTORED TO A STABLE CONDITION WITH SLOPES NOT TO EXCEED 3:1.
5.

DERIVED FROM A TOPOGRAPHIC SURVEY PERFORMED BY FISHER ASSOCIATES IN AUGUST OF 2023. THE CONTRACTOR SHALL VERIFY THE ACCURACY PRIOR TO CONSTRUCTION.

EXISTING FEATURES	
	PROPERTY COUNTY TAX MAP
	CONTOUR LINE
	TOWN LINE
	FENCE
	OVERHEAD ELECTRIC
	UNDERGROUND ELECTRIC
	UNDER GROUND GAS LINE
	UNDER GROUND FIBER OPTIC
	UNDER GROUND WATER
	UNDERGROUND PETROLEUM
	UNDERGROUND STORM SEWER
	UNDERGROUND SANITARY SEWER
	UNDERGROUND TELEPHONE
	NIAGARA MOHAWK POWER CORP. EXISTING PROPERTY LINES
	NIAGARA MOHAWK POWER CORP. EXISTING EASEMENT LIMITS
	NIAGARA MOHAWK POWER CORP. LEGACY PROPERTY LINES
	PARK BOUNDARY LINE
	ADJOINER PROPERTY LINES
	TAX MAP IDENTIFICATION NUMBER (S.B.L)
	SUB-TRANSMISSION & TRANSMISSION LINES
	NIAGARA MOHAWK CORP. L&T DOCUMENT NUMBER
	WOOD POLES
	FLEX TOWERS
	SQUARE BASE TOWERS
	3 LEGGED TOWERS
	GUY WIRES
	CULVERT
	PULL BOX
	LINE MARKER
	BOLLARDS
	DITCH
	STREAM CENTERLINE, I.D. NUMBER CLASS
	STREAM BANK, I.D. NUMBER & CLASS
	DEC WETLAND
	DEC WETLAND 100' ADJACENT AREA
	DELINEATED WETLANDS
	WATER BODY
	FEMA FLOODPLAIN

PROPOSED FEATURES	
	SILT FENCE
	FILTER SOCK
	CULVERT
	BOX CULVERT
	ROCK OUTLET PROTECTION
	DITCH
	CONTOUR LINE (MAJOR)
	CONTOUR LINE (MINOR)
	PERMANENT STABILIZED CONSTRUCTION ENTRANCE
	TEMPORARY STABILIZED CONSTRUCTION ENTRANCE
	LIMIT OF DISTURBANCE
	FENCE
	PROPOSED PERMANENT EASEMENT
	TRANSMISSION LINES (115kV)
	PROPOSED STRUCTURE LOCATION
	PROPOSED INVASIVE SPECIES CLEANING STATION
	GATE TO BE INSTALLED
	TEMPORARY ORANGE CONSTRUCTION FENCE
	TYPE 1 - PROPOSED ACCESS OVER EXISTING, IMPROVE AS NECESSARY
	TYPE 2 - PERMANENT ACCESS ROADS & WORK AREAS
	TYPE 3 - TIMBER MAT DURING CONSTRUCTION PERVIOUS POST CONSTRUCTION
	TYPE 4 - TEMPORARY CONSTRUCTION WORK AREAS, PULLING PADS OR ACCESS, IMPROVE AS NECESSARY
	TYPE 5 - TIMBER MAT ACCESS ROADS & WORK AREAS
	TYPE 6 - BERM ACCESS, IMPROVE AS NECESSARY
	WILDLIFE MANAGEMENT AREA
	EROSION CONTROL FILTER STRIP

SYMBOLS SHOWN HERE MAY BE LARGER OR SMALLER THEN REPRESENTED ON DETAILED DRAWING.



CLEARING LIMITS FOR THE PROJECT WILL BE THE SAME AS THE LIMITS OF DISTURBANCE.

EXISTING #112 LINE STRUCTURES TO BE REMOVED.

6/06/25	GRADING PLAN		LOCKPORT-BATAVIA 112	REBUILD PROJECT	GRADING PLAN LEGEND AND NOTES
	ISSUE DATE	FILE INDEX			
	6.1-L10-M5	L1-41568			
GP-05	GRADING PLAN LEGEND AND NOTES		ACCOUNT NUMBER	APPROVED	APPROVED
	NO.	DATE			



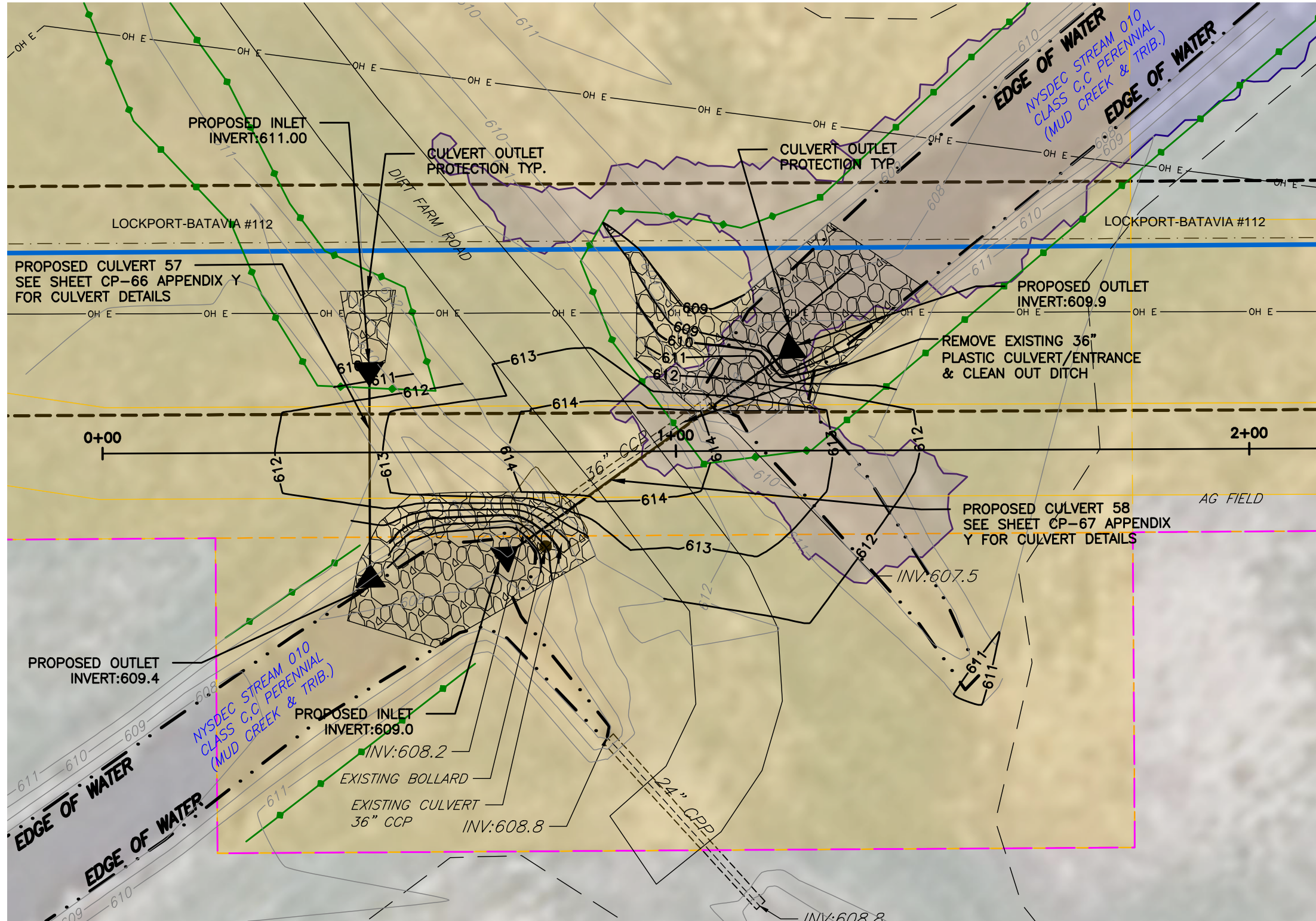
1. DELINEATE LIMITS OF DISTURBANCE AND INSTALL EROSION & SEDIMENT CONTROL BMPs AS SHOWN ON PLAN AND DIRECTED BY ENGINEER OR ENVIRONMENTAL MONITOR.
2. STRIP TOPSOIL AND ORGANICS (± 6 INCHES). STOCKPILE TOPSOIL FOR FINAL SITE RESTORATION. REMOVE ALL SOFT, ORGANIC OR OTHER UNACCEPTABLE MATERIAL FROM THE SUBGRADE AND REPLACE WITH SELECT GRANULAR SUBGRADE, NYSDOT 733-1302.
3. COMPACT THE TOP SIX (6) INCHES OF SUBGRADE TO 95% MAXIMUM DRY DENSITY (MINIMUM) PER ASTM D1557. DURING COMPACTION THE SUBGRADE SHALL BE AT MINUS 3 TO PLUS 2 PERCENT (-3% TO $+2\%$) OF THE OPTIMUM MOISTURE CONTENT.
4. INSTALL GEOTEXTILE IN ACCORDANCE WITH MANUFACTURER'S RECOMMENDATIONS.**
5. PLACE AGGREGATE SUBBASE IN MAXIMUM 12" LIFTS (LOOSE). GRADE AND COMPACT TO 95% MAXIMUM DRY DENSITY.

** GEOTEXTILE NOT REQUIRED IN CONSTRUCTION PADS IDENTIFIED AS "IMPROVE AS NECESSARY"

PROPOSED GRAVEL WORK AREA
(NOT TO SCALE)

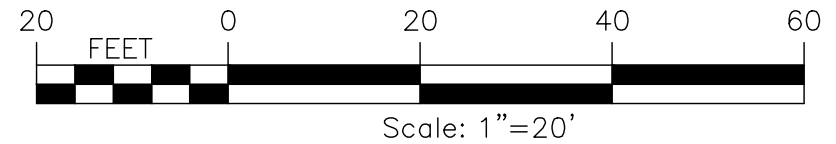


TO	DATE	DESCRIPTION OF ISSUE OR REVISION	DR.	CK.	APP.	<div>PREPARED BY</div> <div></div> <div>ACCOUNT NUMBER</div>					GRADING PLAN	ORIGINAL ISSUE DATE	6/06/25
						DES.	H.P.	LOCKPORT-BATAVIA 112	FILE INDEX	6.1-L10-M5			
						DR.	FISHER	REBUILD PROJECT	DRAWING NUMBER	L1-41568			
						CK.	RW/V/L						
							RW/V/L	GRADING PLAN	SHEET NUMBER	GP-06			

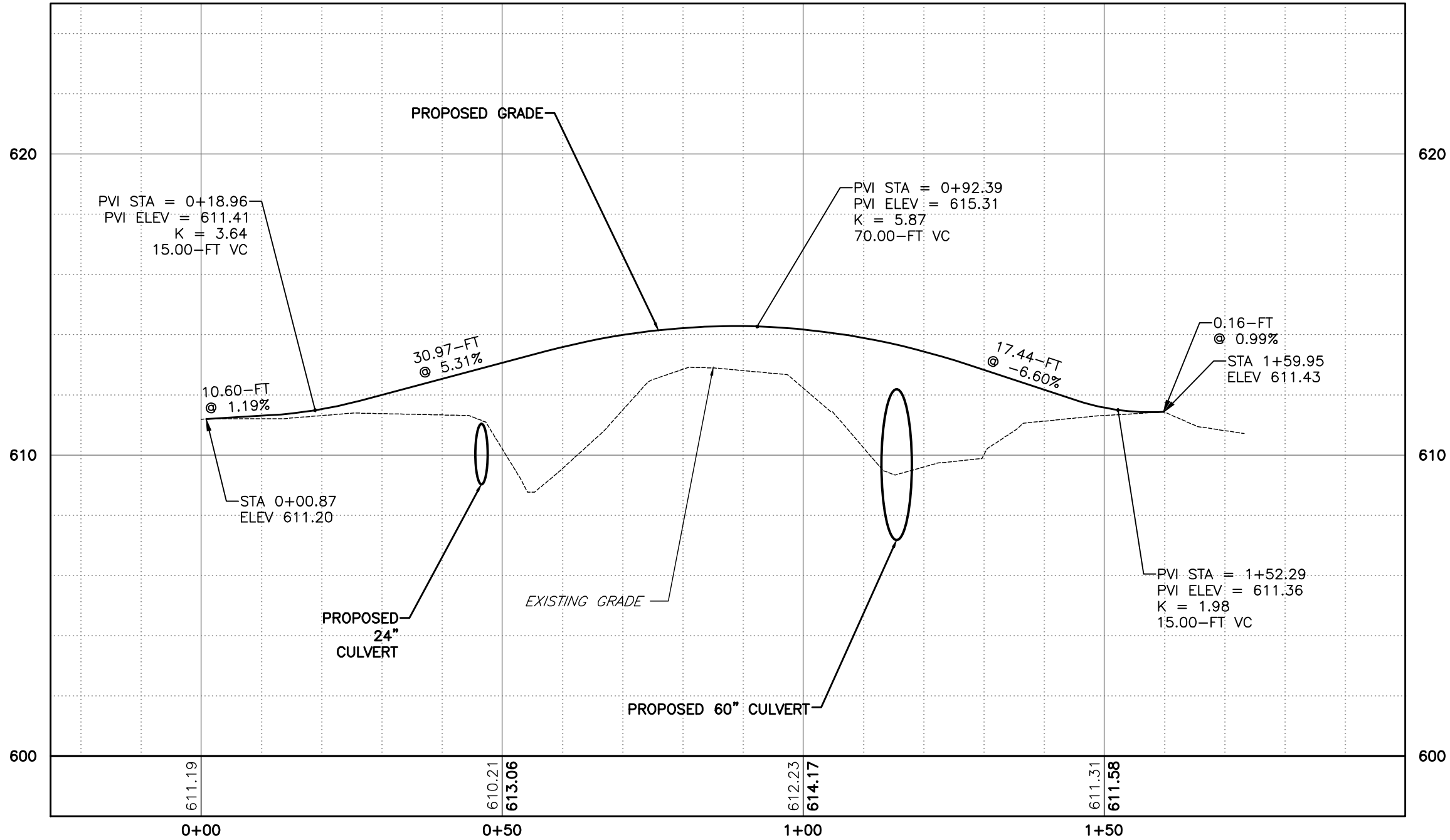


CROSSING SE STRUCTURE #130 GRADING PLAN VIEW
HORIZ: 1"=20'

- NOTE:
1. SEE SHEET GP-04 FOR LEGEND.
 2. GRADING /DISTURBANCE SHALL BE CONFINED TO THE LIMITS SHOWN.
 3. INSTALL EROSION AND SEDIMENT CONTROLS AS SHOWN AT THE DIRECTION OF THE ENVIRONMENTAL MONITOR.
 4. EXCAVATED SOILS ACCEPTABLE FOR USE AS COMMON FILL.
 5. RESTORE WORK PAD AREAS TO A STABLE CONDITION ONCE CONSTRUCTION IS COMPLETE.
 6. POST-CONSTRUCTION SLOPE STABILIZATION:
 - a. SEED AND MULCH TO SLOPE AND STABILIZE STREAM BANKS WITH EROSION CONTROL BLANKET OR RIPRAP.
 7. RESTORATION OF GRADED AREAS: WHERE GRADING HAS OCCURRED, ALL AREAS WILL BE RESTORED TO A STABLE CONDITION WITH SLOPES NOT TO EXCEED 3:1.

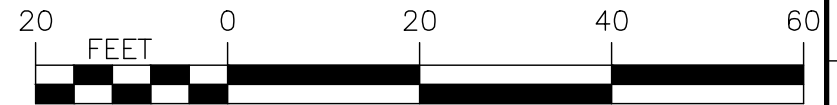


NO.	DATE	DISCUSSION OF ISSUE OR REVISION	APP.	CK.	DR.	APPROVED	RW/VL	FISHER	H.P.	APPROVED	PREPARED BY	nationalgrid				GRADING PLAN				ISSUE DATE	6/06/25
												LOCKPORT-BATAVIA 112				REBUILD PROJECT				FILE	6.1-L10-M5
												REBUILD PROJECT				GRADING PLAN				DRAWING NUMBER	L1-41568
												GRADING PLAN				GP-07				SHEET NUMBER	GP-07



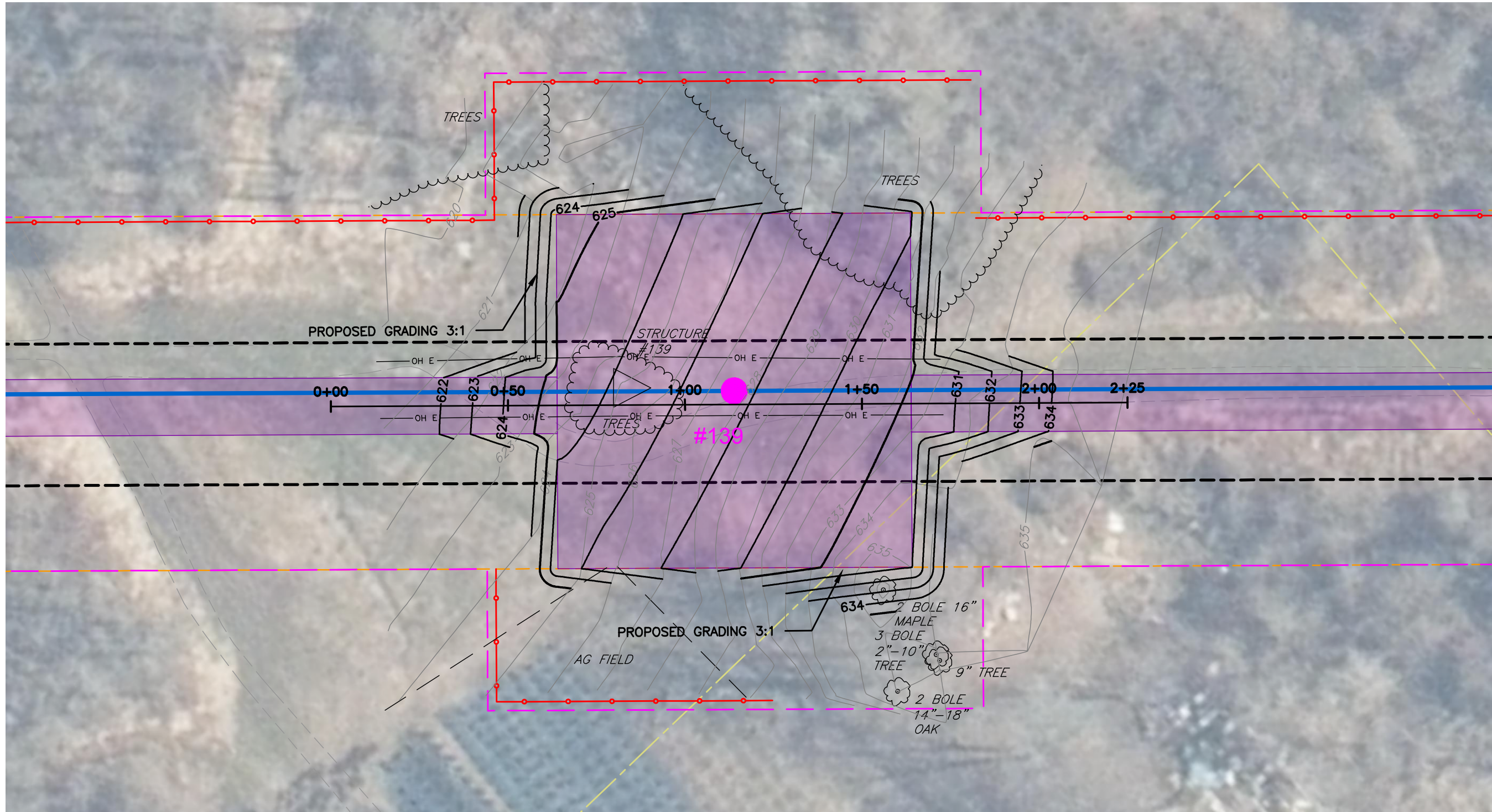
CROSSING SE STRUCTURE #130 PROFILE VIEW

HORIZ: 1" = 20'
VERT: 1" = 4'

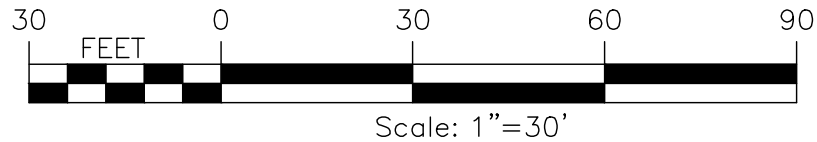


Scale: 1"=20'

NO.	DATE	DISCUSSION OF ISSUE OR REVISION	DR.	CK.	APP.	APPROVED	RW/VL	APPROVED	RW/VL	FISHER	H.P.	APPROVED	DIS.	PREPARED BY	nationalgrid			GRADING PLAN			ISSUE DATE		6/06/25
															LOCKPORT-BATAVIA 112			6.1-L10-M5			FILE INDEX		6/06/25
															REBUILD PROJECT			L1-41568			DRAWING NUMBER		L1-41568
															GRADING PLAN			GP-08			SHEET NUMBER		GP-08



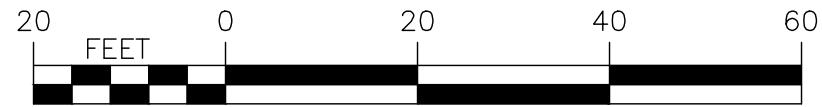
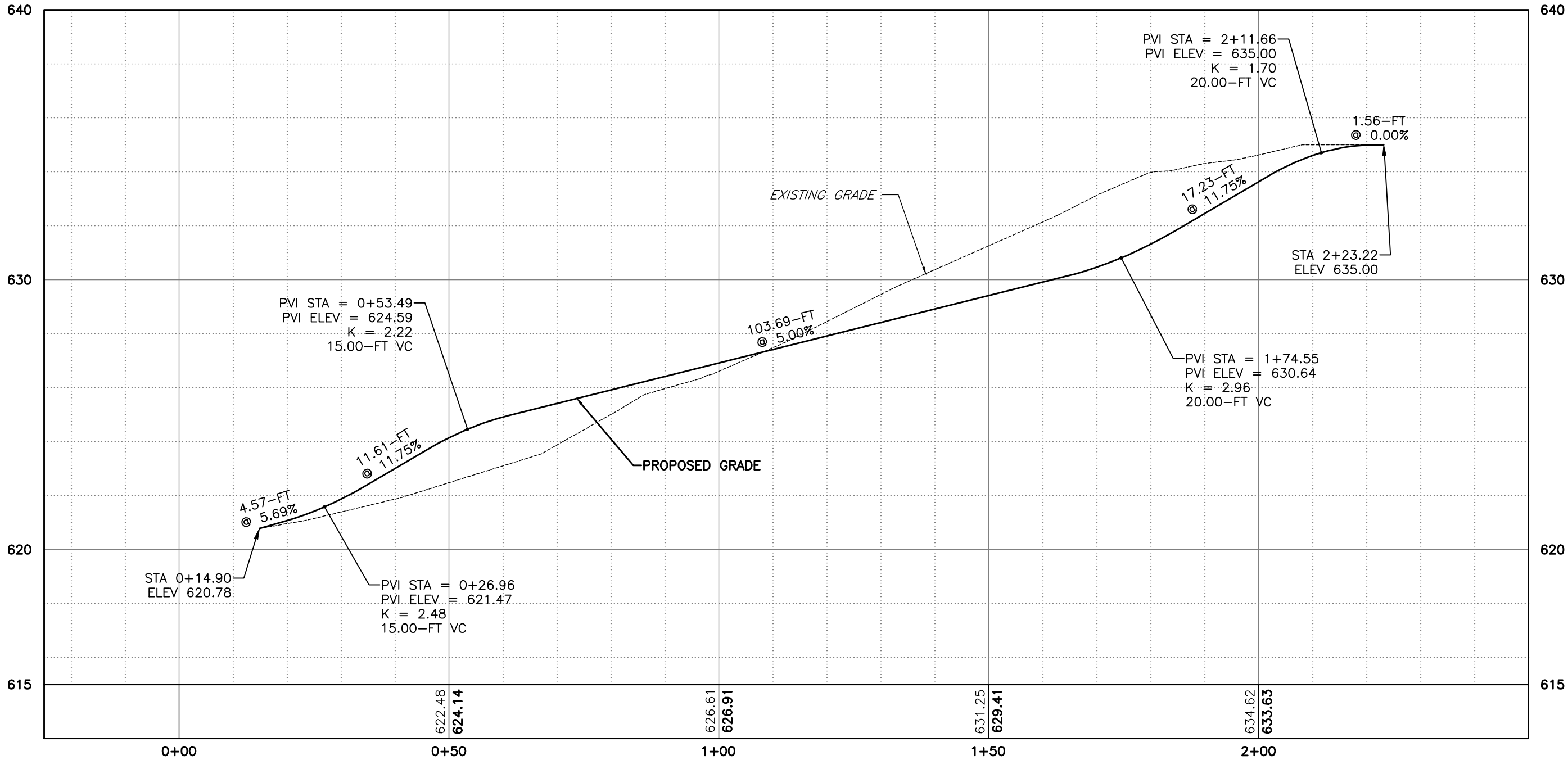
- NOTE:
1. SEE SHEET GP-04 FOR LEGEND.
 2. GRADING /DISTURBANCE SHALL BE CONFINED TO THE LIMITS SHOWN.
 3. INSTALL EROSION AND SEDIMENT CONTROLS AS SHOWN AT THE DIRECTION OF THE ENVIRONMENTAL MONITOR.
 4. EXCAVATED SOILS ACCEPTABLE FOR USE AS COMMON FILL.
 5. RESTORE WORK PAD AREAS TO A STABLE CONDITION ONCE CONSTRUCTION IS COMPLETE.
 6. POST-CONSTRUCTION SLOPE STABILIZATION:
 - a. APPLY TOPSOIL, SEED AND MULCH TO SLOPE AND STABILIZE WITH EROSION CONTROL BLANKET.
 7. RESTORATION OF GRADED AREAS: WHERE GRADING HAS OCCURRED, ALL AREAS WILL BE RESTORED TO A STABLE CONDITION WITH SLOPES NOT TO EXCEED 3:1.



NO.	DATE	DESCRIPTION OF ISSUE OR REVISION	APP.	CK.	DR.	APPROVED	RW/VL	APPROVED	RW/VL	FISHER	H.P.	APPROVED	DIS.	PREPARED BY		GRADING PLAN		ORIGINAL	6/06/25
																LOCKPORT-BATAVIA 112		FILE	6.1-L10-M5
																REBUILD PROJECT		DRAWING	L1-41568
																GRADING PLAN		SHEET	GP-09

PRINTED COPIES ARE NO DOCUMENT CONTROLLED
FOR THE LATEST AUTHORIZED VERSION PLEASE REFER TO THE ENGINEERING CABINET IN DOCUMENTUM

CONFIDENTIALITY STATEMENT
This document contains confidential and proprietary information of National Grid. It is intended for the use of the person to whom it is addressed. It is not to be distributed outside the organization without the written authorization of National Grid. Any other use, its transmission to third parties, or its reproduction without prior express written authorization of National Grid is strictly prohibited.



	nationalgrid										PREPARED BY	GRADING PLAN		DESIGN DATE	6/06/25
												LOCKPORT-BATAVIA 112		FILE INDEX	6.1-L10-M5
												REBUILD PROJECT		DRAWING NUMBER	L1-41568
												GRADING PLAN		SHEET NUMBER	GP-10
											ACCOUNT NUMBER				
												H.P.		APPROVED	
												FISHER		APPROVED	
												RW/VL		APPROVED	
												RW/VL		APPROVED	
												DISC.		APPROVED	
												DR.		APPROVED	
												CK.		APPROVED	
												APP.		APPROVED	
												DR.		CK.	
												DATE		DESCRIPTION OF ISSUE OR REVISION	
												NO.			