



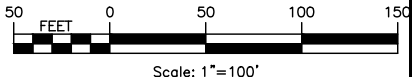
**Lockport-Batavia Line #112  
Rebuild Project**

**Appendix X**

**Traffic Management Plans**

**Part 3 of 7**

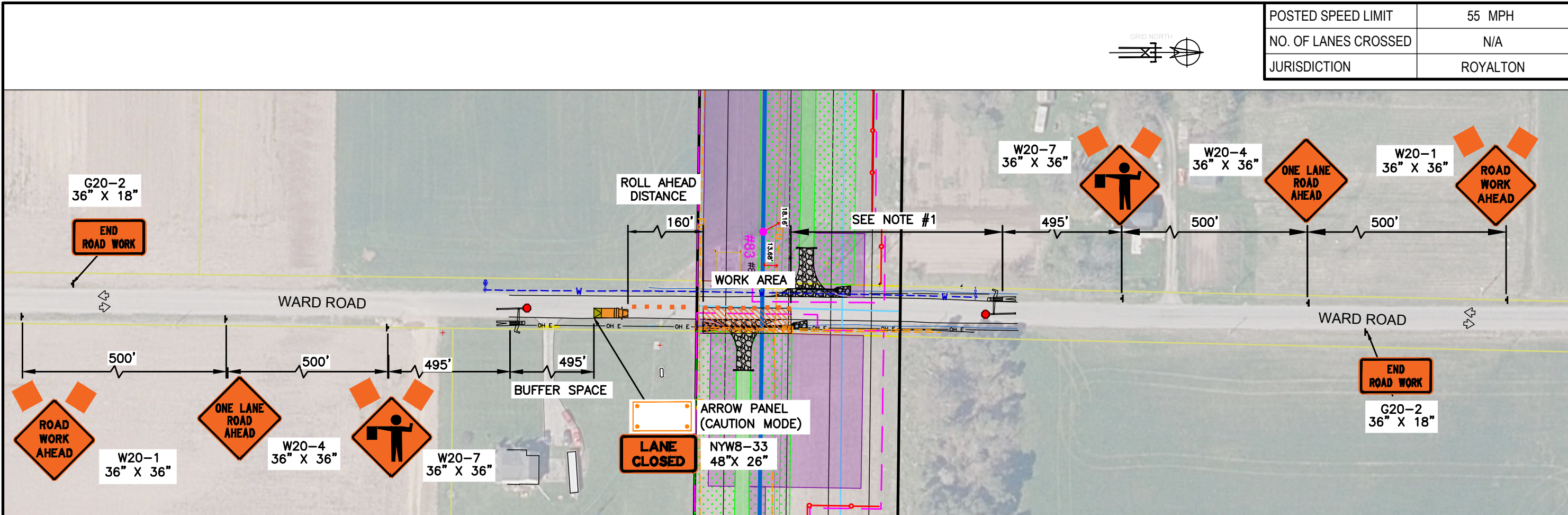




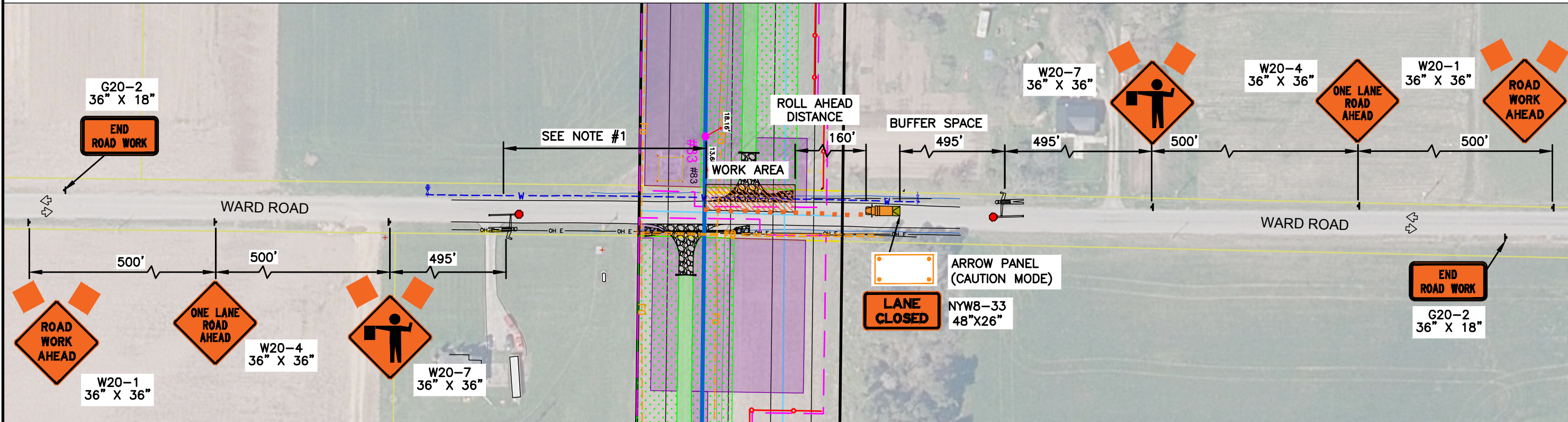


PRINTED COPIES ARE NOT DOCUMENT CONTROLLED.  
FOR THE LATEST AUTHORIZED VERSION PLEASE REFER TO THE ENGINEERING CABINET IN DOCUMENTUM

CONFIDENTIALITY STATEMENT  
This document contains confidential and proprietary information of National Grid. It is not to be distributed outside of National Grid without the written authorization of National Grid. Any other use, its transmission to third parties, or its reproduction without prior express written authorization of National Grid is strictly prohibited.

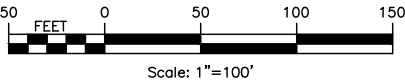


NORTHBOUND LANE CLOSURE – WARD ROAD



SOUTHBOUND LANE CLOSURE –WARD ROAD

NOTE #1:  
THE FLAGGER SHALL BE CLEARLY VISIBLE TO THE FIRST APPROACHING ROAD USER AT ALL TIMES AND SHOULD BE VISIBLE TO WARN THEM (FOR EXAMPLE, WITH AUDIBLE WARNING DEVICES SUCH AS HORNS OR WHISTLES) OF APPROACHING DANGER BY OUT-OF-CONTROL/ NON-COMPLIANT VEHICLES. THE FLAGGER SHALL STAND ALONE, AWAY FROM OTHER WORKERS, WORK VEHICLES, OR EQUIPMENT. THE FLAGGER SHALL IDENTIFY AN ESCAPE ROUTE TO AVOID BEING STRUCK BY AN ERRANT VEHICLE.



POSTED SPEED LIMIT	55 MPH
NO. OF LANES CROSSED	N/A
JURISDICTION	ROYALTON

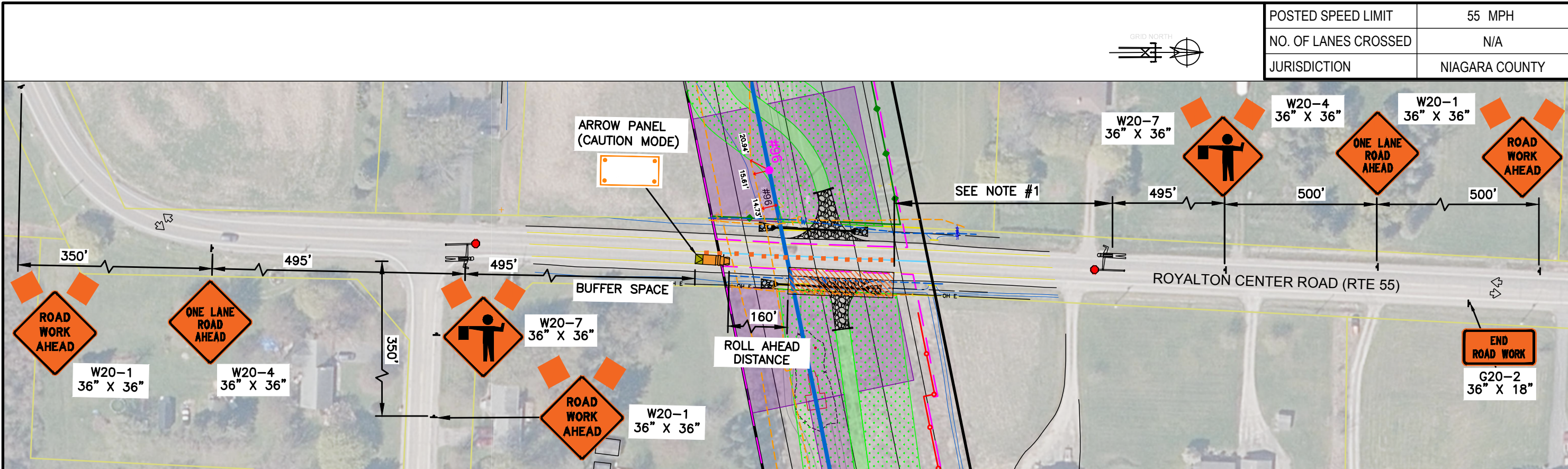
ISSUE DATE	6/06/2025	TRAFFIC MANAGEMENT PLAN	PREPARED BY	APPROVED	TW	DR	CK	APP	NO	DATE
FILE	6.1-L10-M5	LOCKPORT-BATAVIA 112	DESIGNED	APPROVED	FISHER	DR	CK	APP		
DRAWING NUMBER	L1-41568	REBUILD PROJECT	APPROVED	APPROVED	TL	CK	APP	DISCUSSION OF ISSUE/REVISION		
SUPER	TCP-115	TCP PLAN - WARD ROAD	APPROVED	APPROVED	SM	CK	APP			

nationalgrid

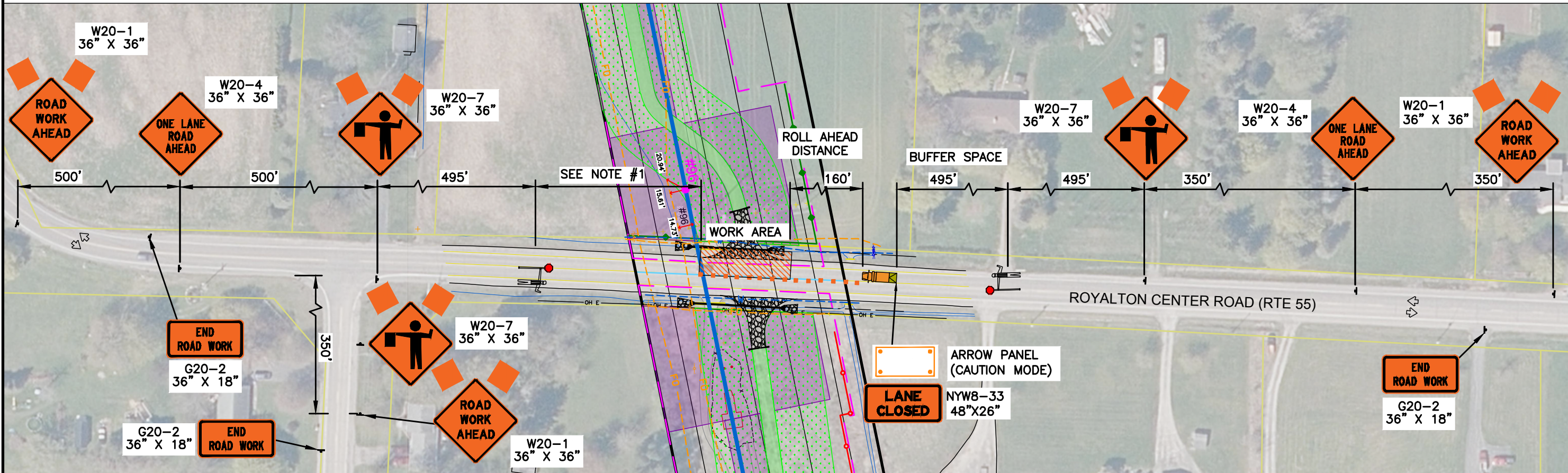


PRINTED COPIES ARE NOT DOCUMENT CONTROLLED.  
FOR THE LATEST AUTHORIZED VERSION PLEASE REFER TO THE ENGINEERING CABINET IN DOCUMENTUM

CONFIDENTIALITY STATEMENT  
This document contains confidential information and is the property of National Grid. It is not to be distributed, copied, or otherwise used without the written authorization of National Grid. Any use of this document without the written authorization of National Grid is strictly prohibited.

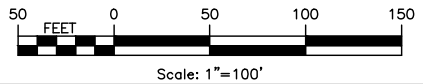


NORTHBOUND LANE CLOSURE – ROYALTON CENTER ROAD (RTE 55)



SOUTHBOUND LANE CLOSURE – ROYALTON CENTER ROAD (RTE 55)

NOTE #1:  
THE FLAGGER SHALL BE CLEARLY VISIBLE TO THE FIRST APPROACHING ROAD USER AT ALL TIMES AND SHOULD BE VISIBLE TO WARN THEM (FOR EXAMPLE, WITH AUDIBLE WARNING DEVICES SUCH AS HORNS OR WHISTLES) OF APPROACHING DANGER BY OUT-OF-CONTROL/ NON-COMPLIANT VEHICLES. THE FLAGGER SHALL STAND ALONE, AWAY FROM OTHER WORKERS, WORK VEHICLES, OR EQUIPMENT. THE FLAGGER SHALL IDENTIFY AN ESCAPE ROUTE TO AVOID BEING STRUCK BY AN ERRANT VEHICLE.



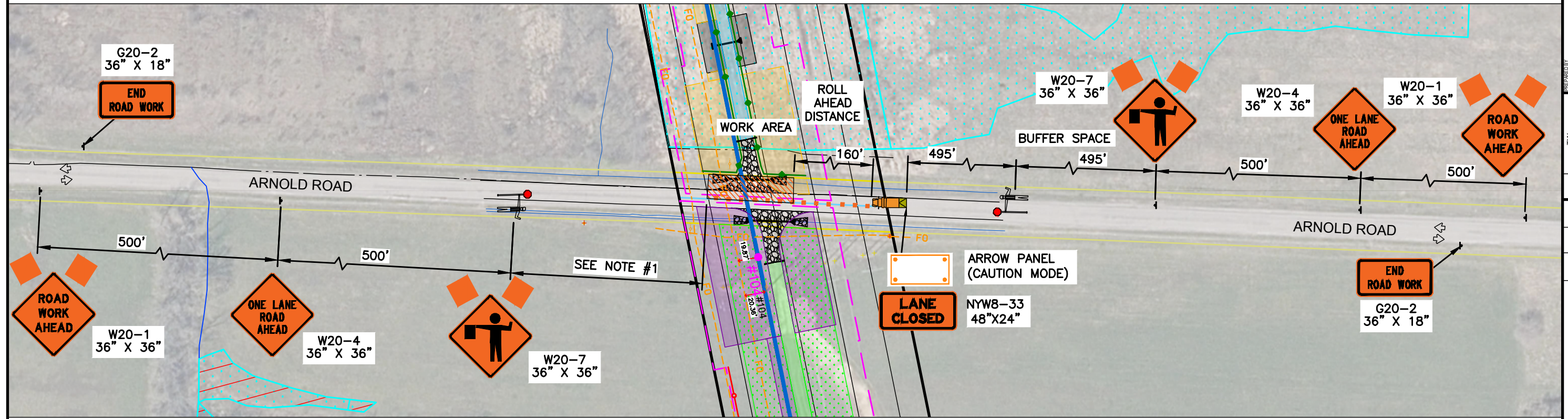
POSTED SPEED LIMIT	55 MPH
NO. OF LANES CROSSED	N/A
JURISDICTION	NIAGARA COUNTY

ISSUE DATE	6/06/2025	TRAFFIC MANAGEMENT PLAN	LOCKPORT-BATAVIA 112
FILE	6.1-L10-M5	REBUILD PROJECT	TCP PLAN - ROYALTON CENTER ROAD
DRAWING NUMBER	L1-41568		
SHEET	TCP-116		

nationalgrid

DES.	APPROVED	TW	FISHER	TL	SM
DR.	APPROVED				
CK.	APPROVED				
APP.	APPROVED				
NO.	DATE	DISCUSSION OF ISSUE/REVISION			





POSTED SPEED LIMIT	55 MPH
NO. OF LANES CROSSED	N/A
JURISDICTION	ROYALTON

50 0 50 100 150

FEET

Scale: 1"=100'

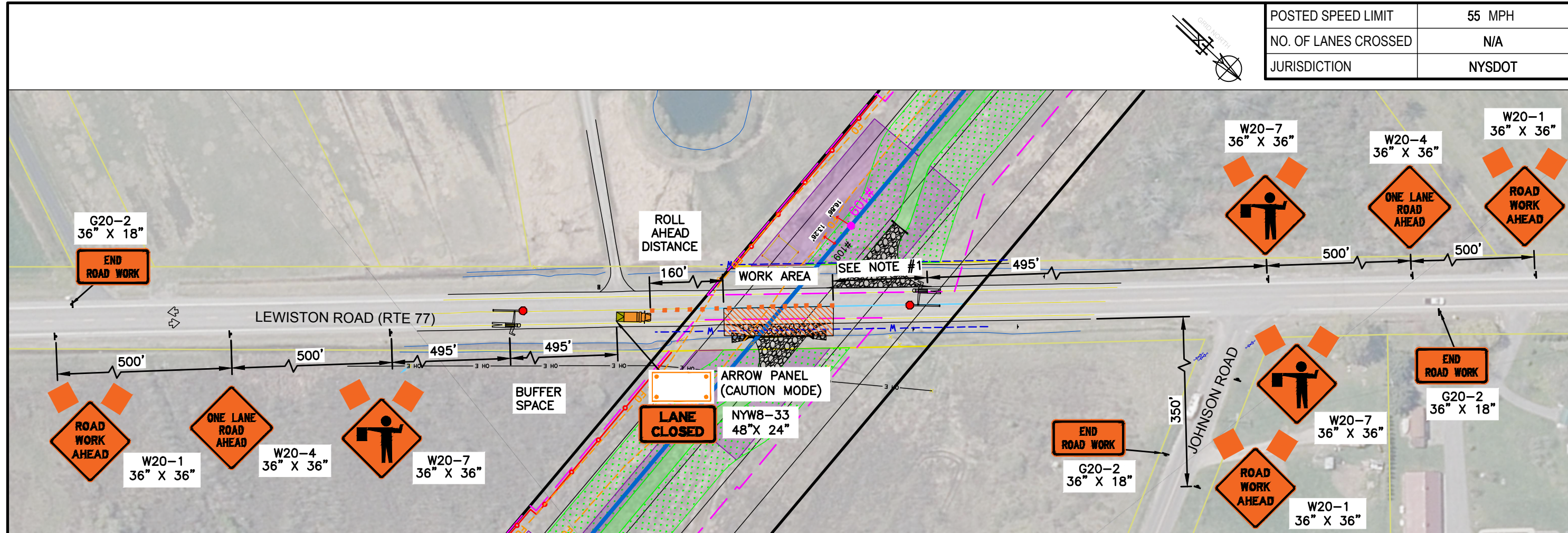
ORIGINAL ISSUE DATE	6/06/2025
FILE INDEX	6.1-L10-M5
DRAWING SUBJECT	L1-41568
SHEET NUMBER	TCP-117

TRAFFIC MANAGEMENT PLAN	LOCKPORT-BATAVIA 112
REBUILD PROJECT	TCP PLAN - ARNOLD ROAD

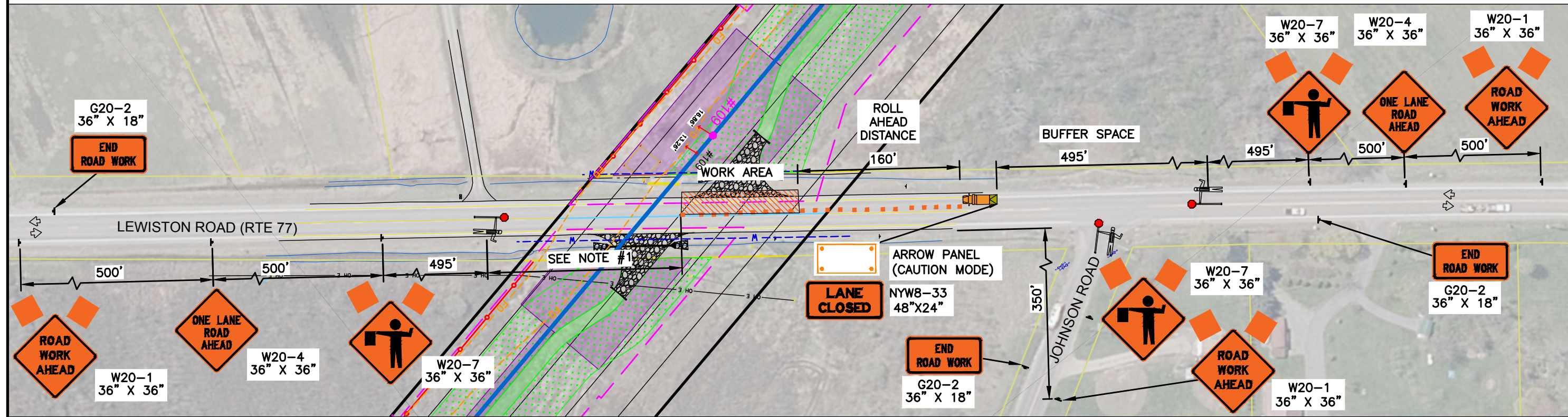
nationalgrid	
ACCOUNT NUMBER	

PREPARED BY	TW
APPROVED	FISHER
DR	TL
OK	SM
APP.	
DR.	OK.
DATE	
DESCRIPTION OF ISSUE OR REVISION	



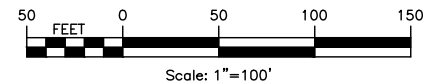


NORTHBOUND LANE CLOSURE – LEWISTON ROAD (RTE 77)



SOUTHBOUND LANE CLOSURE – LEWISTON ROAD (RTE 77)

NOTE #1:  
THE FLAGGER SHALL BE CLEARLY VISIBLE TO THE FIRST APPROACHING ROAD USER AT ALL TIMES AND SHOULD BE VISIBLE TO WARN THEM (FOR EXAMPLE, WITH AUDIBLE WARNING DEVICES SUCH AS HORNS OR WHISTLES) OF APPROACHING DANGER BY OUT-OF-CONTROL/ NON-COMPLIANT VEHICLES. THE FLAGGER SHALL STAND ALONE, AWAY FROM OTHER WORKERS, WORK VEHICLES, OR EQUIPMENT. THE FLAGGER SHALL IDENTIFY AN ESCAPE ROUTE TO AVOID BEING STRUCK BY AN ERRANT VEHICLE.



POSTED SPEED LIMIT	55 MPH
NO. OF LANES CROSSED	N/A
JURISDICTION	NYS DOT

ISSUE DATE	6/06/2025	TRAFFIC MANAGEMENT PLAN	LOCKPORT-BATAVIA 112	REBUILD PROJECT	TCP PLAN - LEWISTON ROAD
	FILE				
	DRAWING NUMBER				
	SHEET				
ISSUE DATE	6/06/2025	NATIONAL GRID	ACCOUNT NUMBER	DISCUSSION OF ISSUE OR REVISION	NO.
	FILE				
	DRAWING NUMBER				
	SHEET				
ISSUE DATE	6/06/2025	TWO	FISHER	TL	SM
	FILE				
	DRAWING NUMBER				
	SHEET				
ISSUE DATE	6/06/2025	DES.	DR.	CK.	APP.
	FILE				
	DRAWING NUMBER				
	SHEET				
ISSUE DATE	6/06/2025	DATE	DATE	DATE	DATE
	FILE				
	DRAWING NUMBER				
	SHEET				

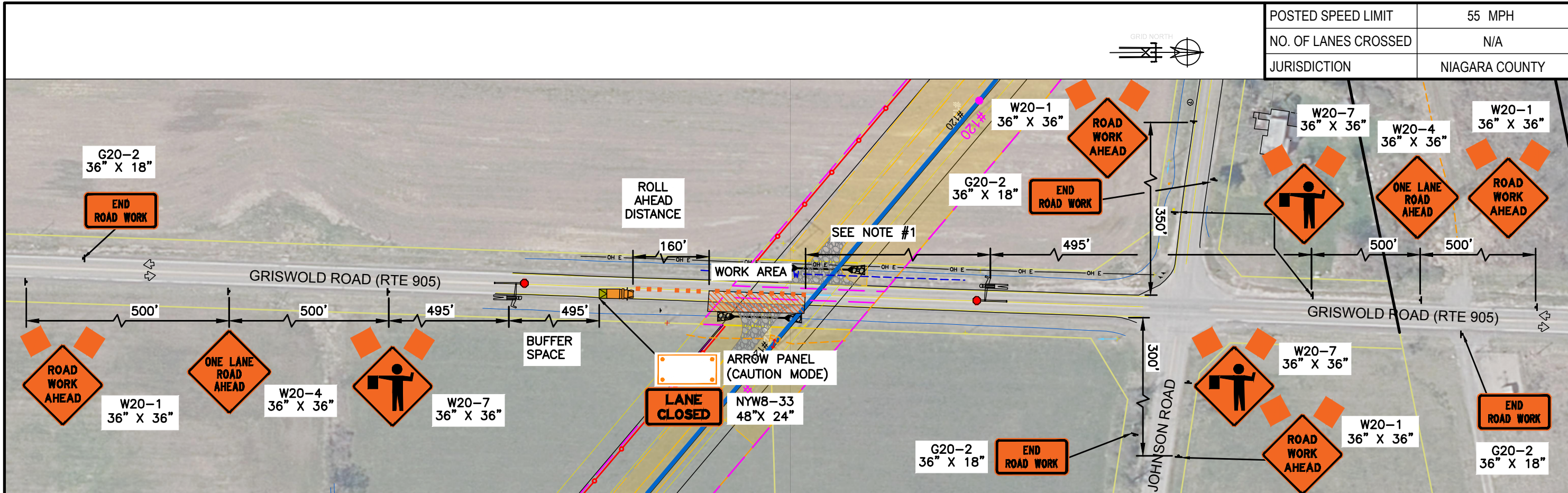


[illegible]

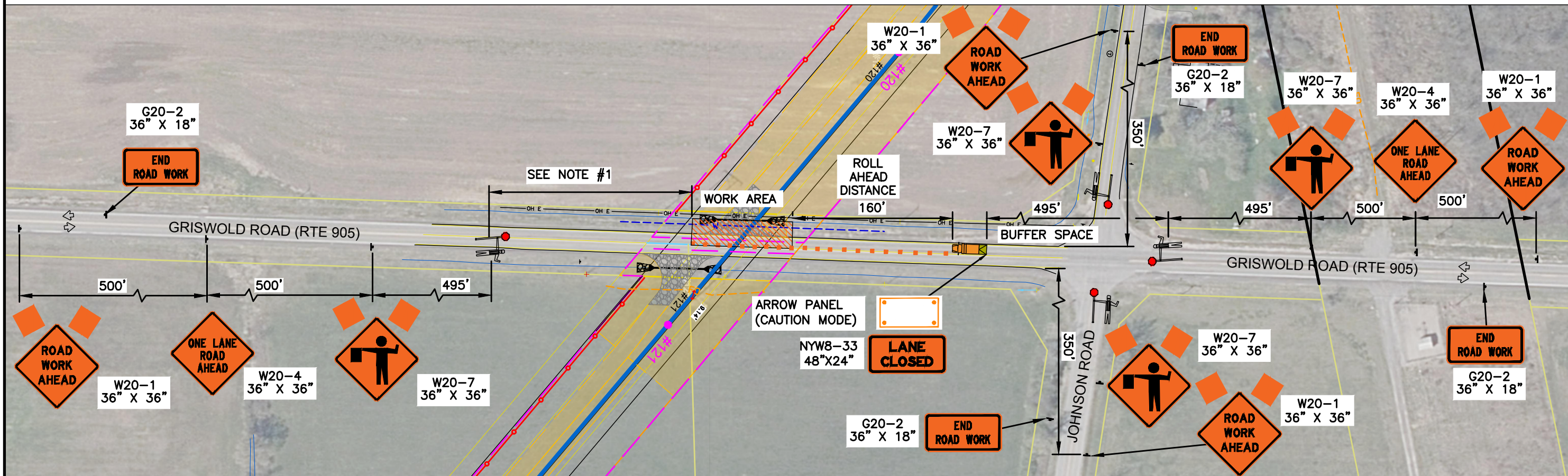


PRINTED COPIES ARE NOT DOCUMENT CONTROLLED.  
FOR THE LATEST AUTHORIZED VERSION PLEASE REFER TO THE ENGINEERING CABINET IN DOCUMENTUM

CONFIDENTIALITY STATEMENT  
This document contains confidential and proprietary information of National Grid. It is intended for the use of National Grid and its authorized personnel only. It is not to be distributed, copied, or otherwise used by any other party without the written authorization of National Grid. Any other use, its transmission to third parties, or its reproduction without prior express written authorization of National Grid is strictly prohibited.

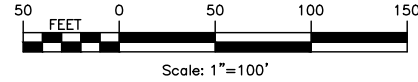


NORTHBOUND LANE CLOSURE - GRISWOLD ROAD (RTE 905)



SOUTHBOUND LANE CLOSURE - GRISWOLD ROAD (RTE 905)

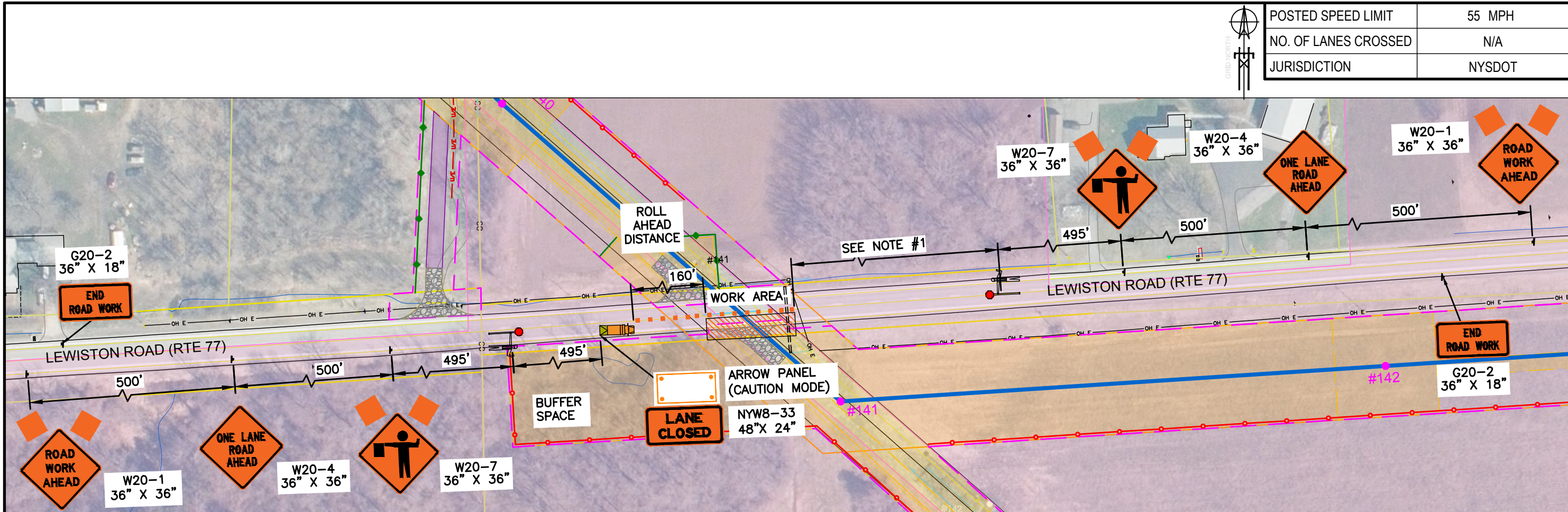
NOTE #1:  
THE FLAGGER SHALL BE CLEARLY VISIBLE TO THE FIRST APPROACHING ROAD USER AT ALL TIMES AND SHOULD BE VISIBLE TO WARN THEM (FOR EXAMPLE, WITH AUDIBLE WARNING DEVICES SUCH AS HORNS OR WHISTLES) OF APPROACHING DANGER BY OUT-OF-CONTROL/ NON-COMPLIANT VEHICLES. THE FLAGGER SHALL STAND ALONE, AWAY FROM OTHER WORKERS, WORK VEHICLES, OR EQUIPMENT. THE FLAGGER SHALL IDENTIFY AN ESCAPE ROUTE TO AVOID BEING STRUCK BY AN ERRANT VEHICLE.



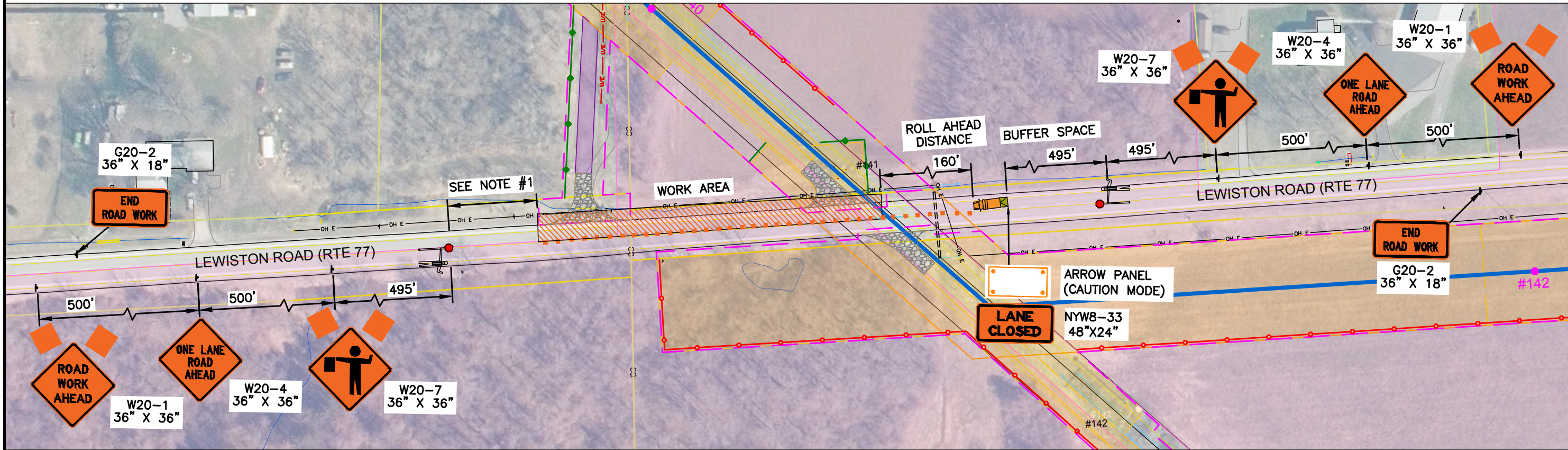
POSTED SPEED LIMIT	55 MPH
NO. OF LANES CROSSED	N/A
JURISDICTION	NIAGARA COUNTY

ISSUE DATE	6/06/2025	TRAFFIC MANAGEMENT PLAN
FILE	6.1-L10-M5	LOCKPORT-BATAVIA 112
DRAWING NUMBER	L1-41568	REBUILD PROJECT
SHEET	TCP-120	TCP PLAN - GRISWOLD ROAD
PREPARED BY	TW	APPROVED BY
DESIGNED BY	FISHER	APPROVED BY
DRAWN BY	TL	APPROVED BY
CHECKED BY	SM	APPROVED BY
DATE		DESCRIPTION OF ISSUE OR REVISION
NO.		



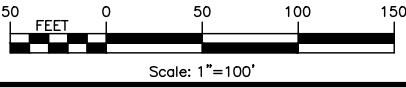


EASTBOUND LANE CLOSURE – LEWISTON ROAD (RTE 77)



WESTBOUND LANE CLOSURE – LEWISTON ROAD (RTE 77)

NOTE #1:  
THE FLAGGER SHALL BE CLEARLY VISIBLE TO THE FIRST APPROACHING ROAD USER AT ALL TIMES AND SHOULD BE VISIBLE TO WARN THEM (FOR EXAMPLE, WITH AUDIBLE WARNING DEVICES SUCH AS HORNS OR WHISTLES) OF APPROACHING DANGER BY OUT-OF-CONTROL/ NON-COMPLIANT VEHICLES. THE FLAGGER SHALL STAND ALONE, AWAY FROM OTHER WORKERS, WORK VEHICLES, OR EQUIPMENT. THE FLAGGER SHALL IDENTIFY AN ESCAPE ROUTE TO AVOID BEING STRUCK BY AN ERRANT VEHICLE.



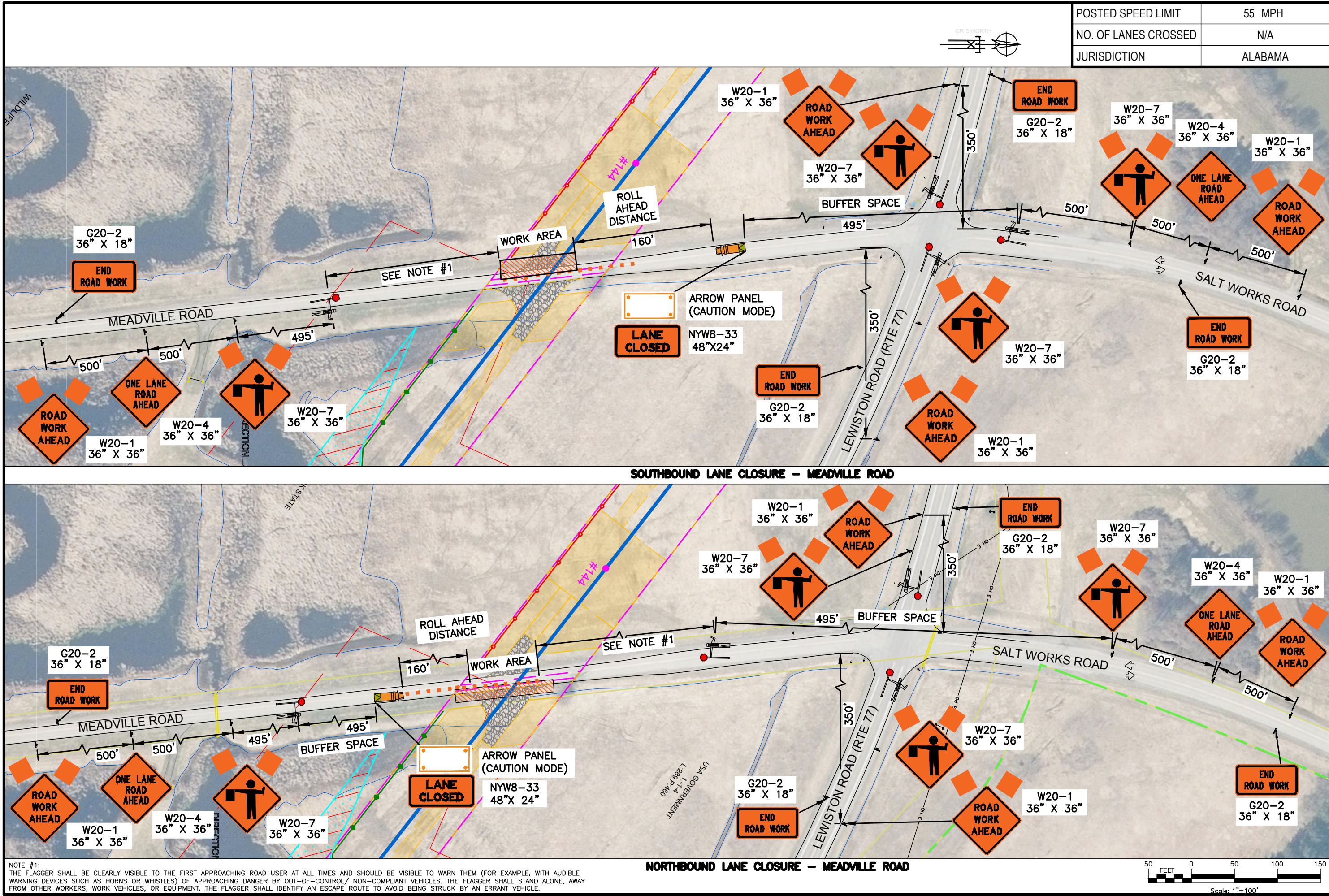
POSTED SPEED LIMIT	55 MPH
NO. OF LANES CROSSED	N/A
JURISDICTION	NYS DOT

ISSUE DATE	6/06/2025	TRAFFIC MANAGEMENT PLAN
FILE	6.1-L10-M5	LOCKPORT-BATAVIA 112
DRAWING NUMBER	L1-41568	REBUILD PROJECT
SHEET	TCP-121	TCP PLAN - LEWISTON ROAD
PREPARED BY	TW	APPROVED
DESIGNED BY	FISHER	APPROVED
CHECKED BY	TL	APPROVED
APPROVED BY	SM	APPROVED
NO.	DATE	DESCRIPTION OF ISSUE OR REVISION



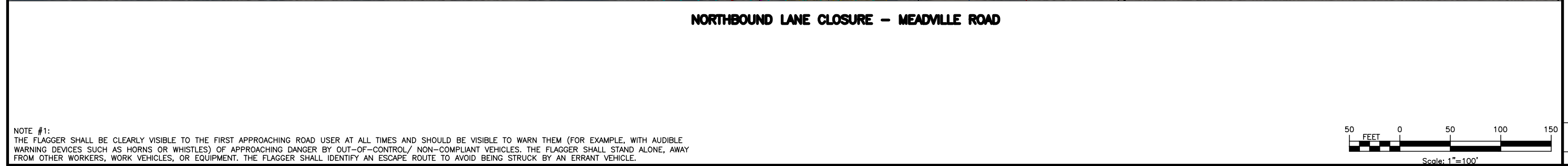
PRINTED COPIES ARE NOT DOCUMENT CONTROLLED.  
FOR THE LATEST AUTHORIZED VERSION PLEASE REFER TO THE ENGINEERING CABINET IN DOCUMENTUM

CONFIDENTIALITY STATEMENT  
This document contains confidential and proprietary information of National Grid, its subsidiaries, affiliates, or other related entities. It is not to be distributed, copied, or otherwise used without the prior written consent of National Grid. Any use of this document without the prior written consent of National Grid is strictly prohibited.



ISSUE DATE	6/06/2025
FILE	6.1-L10-M5
DRAWING NUMBER	L1-41568
SHEET	TCP-122
APPROVED	TW
APPROVED	FISHER
APPROVED	TL
APPROVED	SM
DISCRIPTION OF ISSUE OR REVISION	
NO.	DATE



[illegible]