

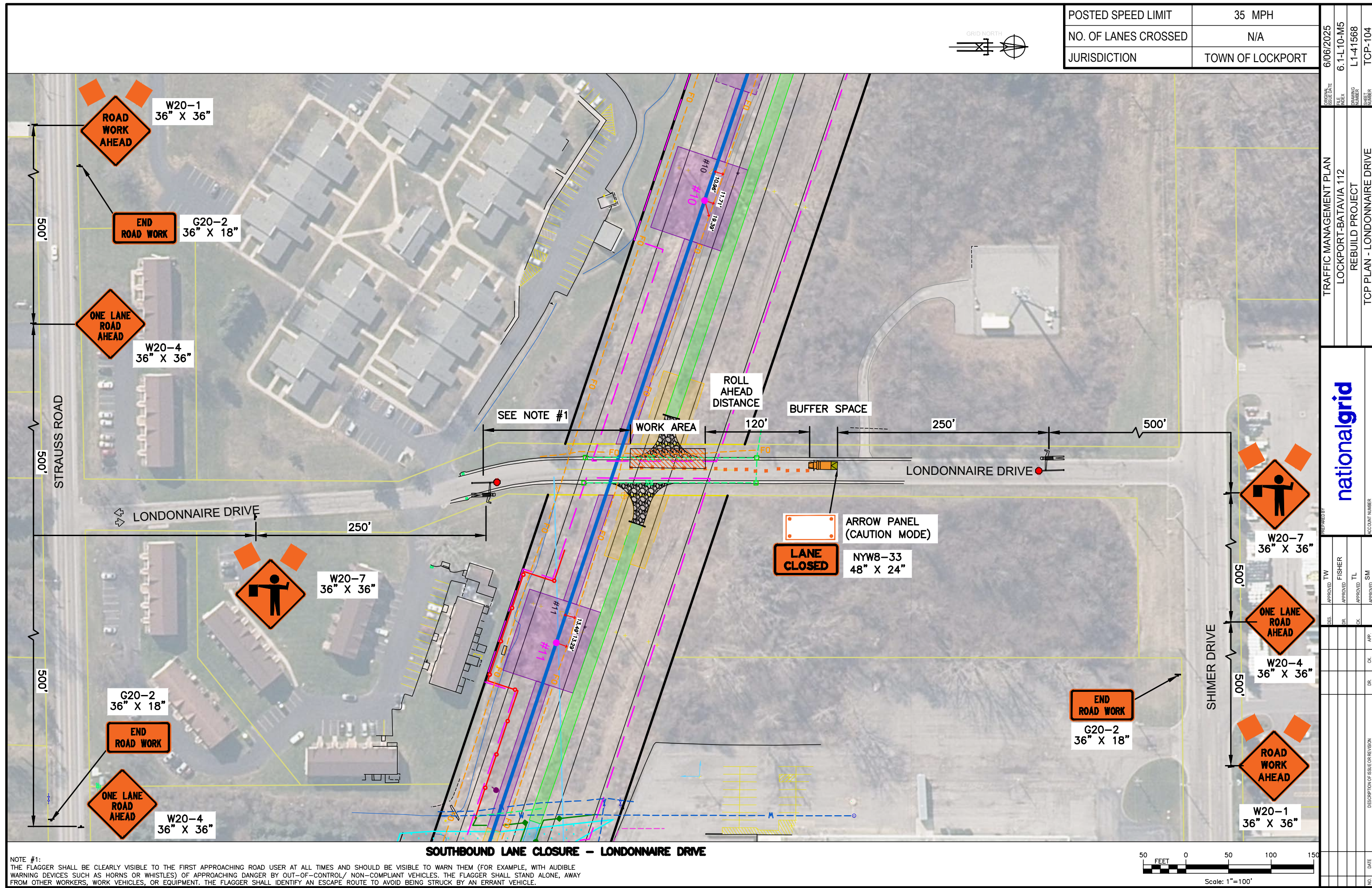


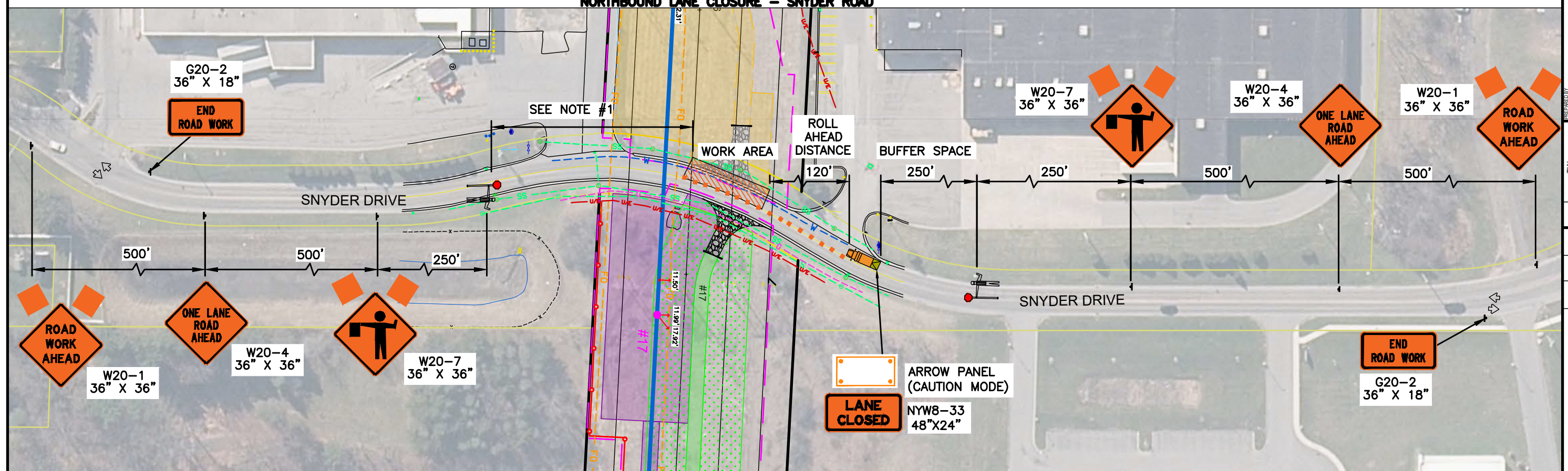
**Lockport-Batavia Line #112
Rebuild Project**

Appendix X

Traffic Management Plans

Part 2 of 7



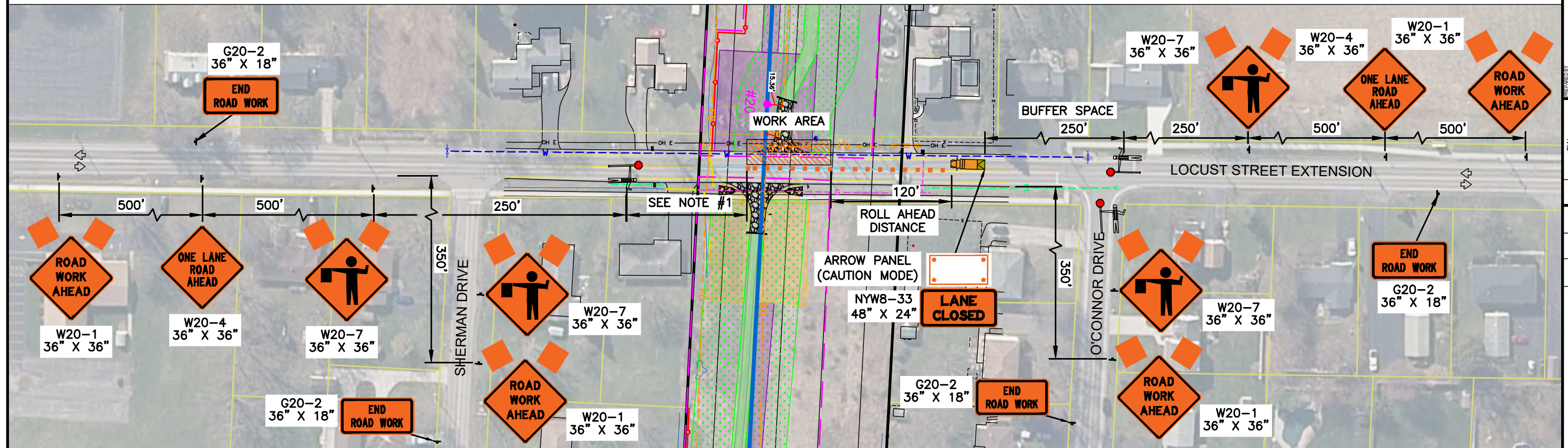


50 0 50 100 150

FEET

Scale: 1"=100'

[illegible]



50 0 50 100 150

FEET

Scale: 1"=100'

6/06/2025
5.1-L10-M5
L1-41568
TCP-106

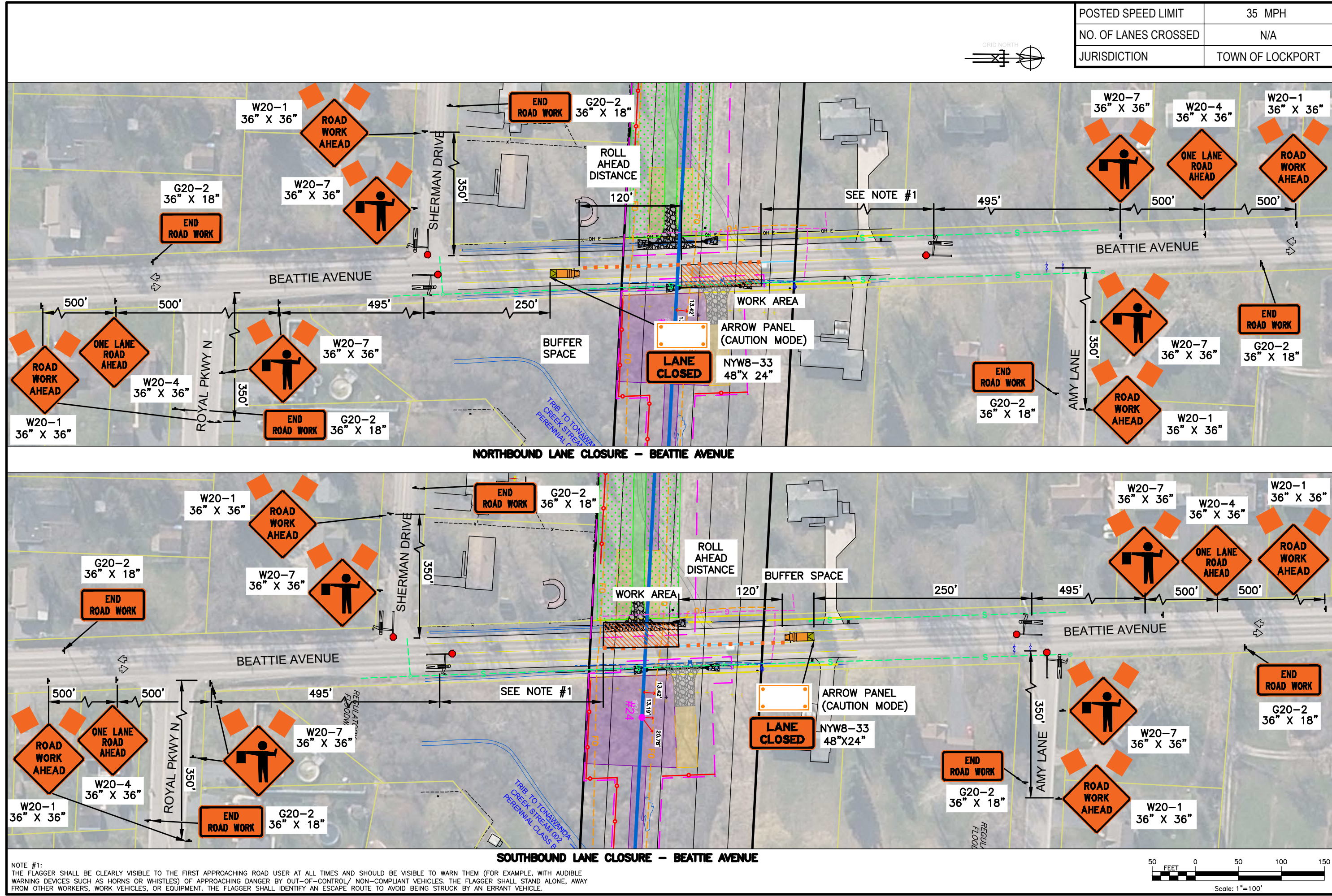
LOCKPORT-BATAVIA 112
REBUILD PROJECT
TCP PLAN - LOCUST STREET EXTENSION

nationalgrid

NO.	DATE	DESCRIPTION OF ISSUE OR REVISION	DR	CR	APP.		ACCOUNT NUMBER
						DES. APPROVED	TW
						DR. APPROVED	FISHER
						CR. APPROVED	TL
						CR. APPROVED	SM

PRINTED COPIES ARE NOT DOCUMENT CONTROLLED.
FOR THE LATEST AUTHORIZED VERSION PLEASE REFER TO THE ENGINEERING CABINET IN DOCUMENTUM

CONFIDENTIALITY STATEMENT
This document contains confidential information and proprietary information of National Grid. It is intended solely for the use of the person to whom it is addressed. It is not to be distributed, copied, or otherwise used in any manner without the prior written authorization of National Grid. Any other use, its transmission to third parties, or its reproduction without prior express written authorization of National Grid is strictly prohibited.



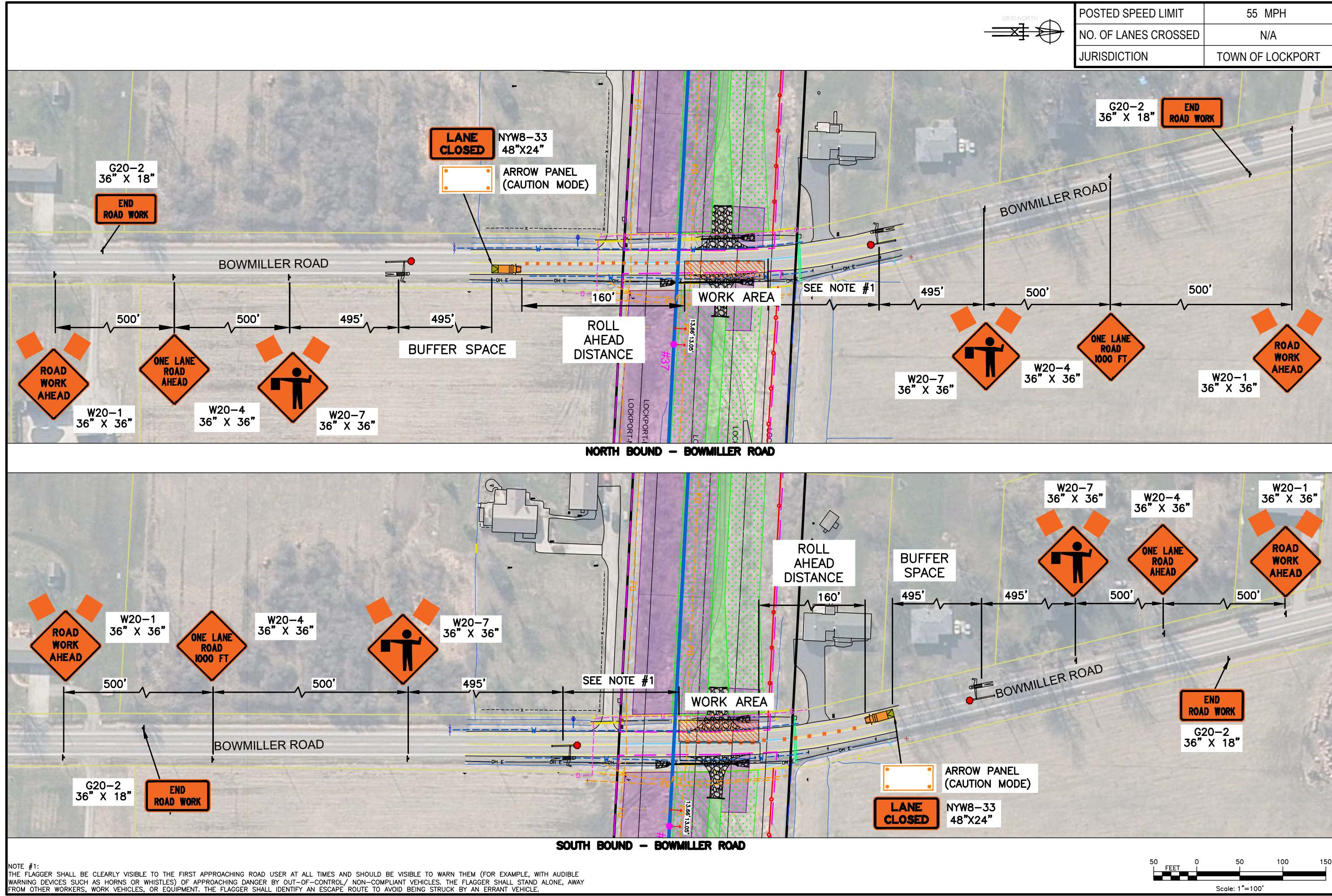
POSTED SPEED LIMIT	35 MPH
NO. OF LANES CROSSED	N/A
JURISDICTION	TOWN OF LOCKPORT

ISSUE DATE	6/06/2025	TRAFFIC MANAGEMENT PLAN	LOCKPORT-BATAVIA 112
FILE	6.1-1-10-M5	REBUILD PROJECT	TCP PLAN - BEATTIE AVENUE
DRAWING NUMBER	L1-41568		
SHEET	TCP-107		
DES.	TW	APPROVED	
CHK.	FISHER	APPROVED	
APP.	TL	APPROVED	
DISCUSSION OF ISSUE OR REVISION	SM	APPROVED	
NO.	DATE		

nationalgrid

PRINTED COPIES ARE NOT DOCUMENT CONTROLLED.
FOR THE LATEST AUTHORIZED VERSION PLEASE REFER TO THE ENGINEERING CABINET IN DOCUMENTUM

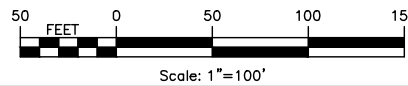
CONFIDENTIALITY STATEMENT
This document contains confidential information and is the property of National Grid. It is to be used only for the purposes for which it was prepared and is not to be distributed, copied, or reproduced in any form without the written authorization of National Grid. Any other use, its transmission to third parties, or its reproduction without prior express written authorization of National Grid is strictly prohibited.



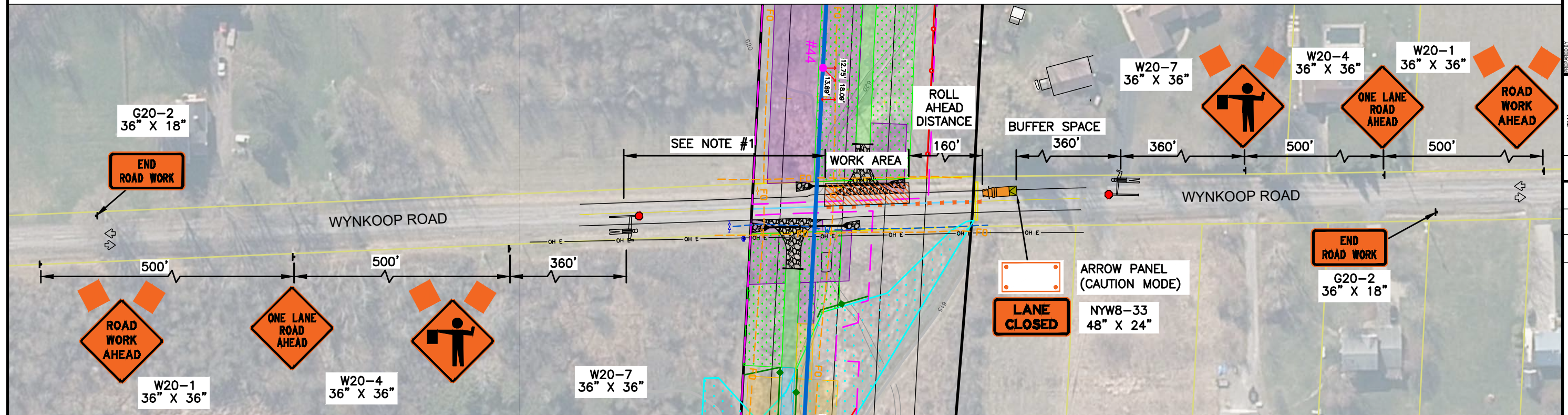
POSTED SPEED LIMIT	55 MPH
NO. OF LANES CROSSED	N/A
JURISDICTION	TOWN OF LOCKPORT

ISSUE DATE	6/06/2025	PREPARED BY	TW	APPROVED	DR	CK	APP	NO	DATE
FILE NAME	6.1-L10-M5	ISSUED BY	FISHER	APPROVED	DR	CK	APP	NO	DATE
DRAWING NUMBER	L1-41568	PROJECT	TL	APPROVED	DR	CK	APP	NO	DATE
SHEET NUMBER	TCP-108	DESCRIPTION OF ISSUE OR REVISION	SM	APPROVED	DR	CK	APP	NO	DATE
TRAFFIC MANAGEMENT PLAN	LOCKPORT-BATAVIA 112	ACCOUNT NUMBER							
REBUILD PROJECT	TCP PLAN - BOWMILLER ROAD								

nationalgrid



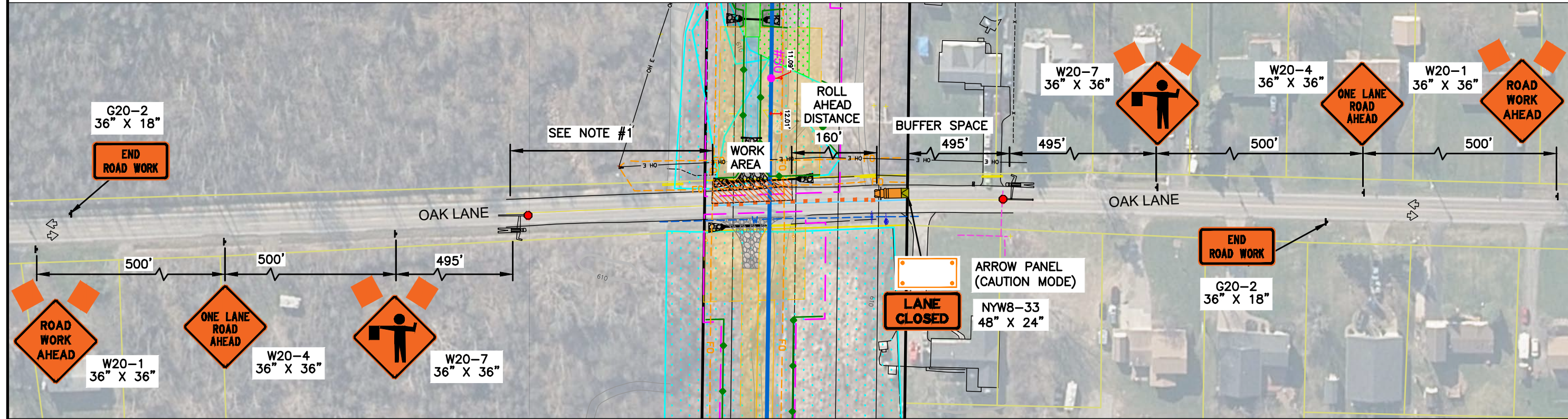
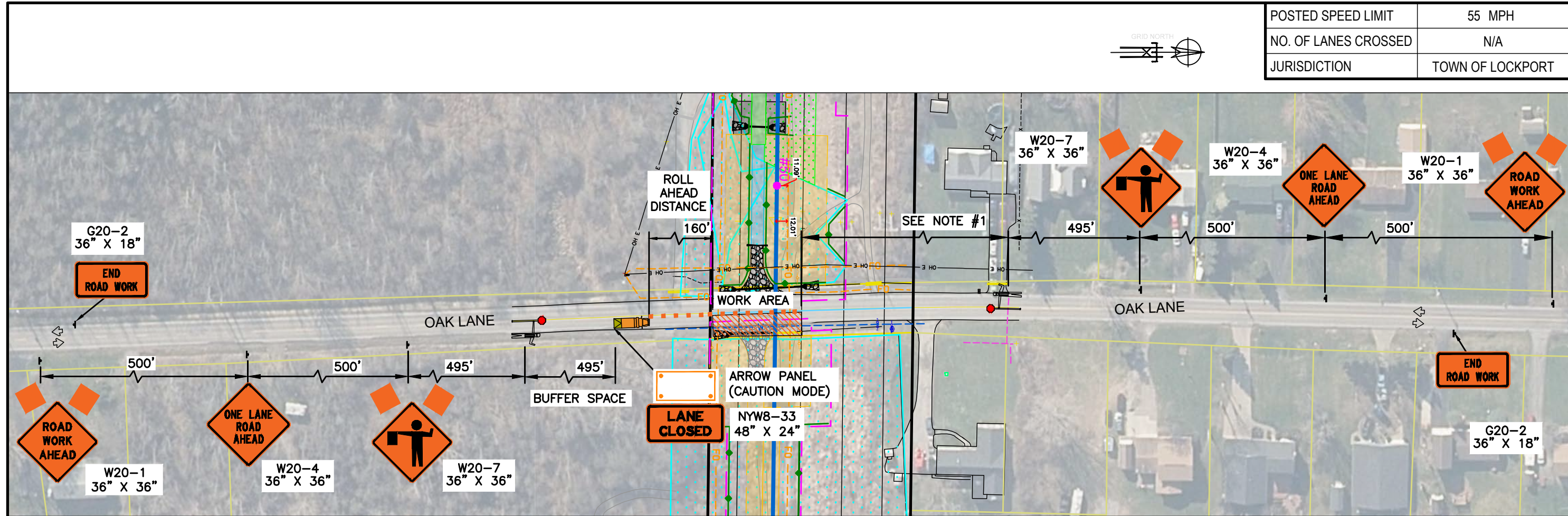
NOTE #1:
THE FLAGGER SHALL BE CLEARLY VISIBLE TO THE FIRST APPROACHING ROAD USER AT ALL TIMES AND SHOULD BE VISIBLE TO WARN THEM (FOR EXAMPLE, WITH AUDIBLE WARNING DEVICES SUCH AS HORNS OR WHISTLES) OF APPROACHING DANGER BY OUT-OF-CONTROL/ NON-COMPLIANT VEHICLES. THE FLAGGER SHALL STAND ALONE, AWAY FROM OTHER WORKERS, WORK VEHICLES, OR EQUIPMENT. THE FLAGGER SHALL IDENTIFY AN ESCAPE ROUTE TO AVOID BEING STRUCK BY AN ERRANT VEHICLE.



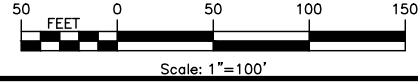
																			
						ACCOUNT NUMBER													
NO.	DATE	DESCRIPTION OF ISSUE OR REVISION				DR.	CK.	APP.	DES.	APPROVED	TW								
									DR.	APPROVED	FISHER								
											TL								
									CK.	APPROVED									
TRAFFIC MANAGEMENT PLAN													LOCKPORT-BATAVIA 112		FILE INDEX	6.1-L10-M5	ORIGINAL ISSUE DATE	6/06/2025	
REBUILD PROJECT													TCP PLAN - WYNKOOP ROAD		DRAWING NUMBER	L141568			
															SHEET NUMBER	TCP-109			

PRINTED COPIES ARE NOT DOCUMENT CONTROLLED.
FOR THE LATEST AUTHORIZED VERSION PLEASE REFER TO THE ENGINEERING CABINET IN DOCUMENTUM

CONFIDENTIALITY STATEMENT
This document contains confidential information and proprietary information of National Grid. It is intended for the use of the person to whom it is addressed and should not be distributed to other persons without the written authorization of National Grid. It is strictly prohibited to reproduce, copy, or in any way disclose the contents of this document to third parties, or its reproduction without prior express written authorization of National Grid is strictly prohibited.



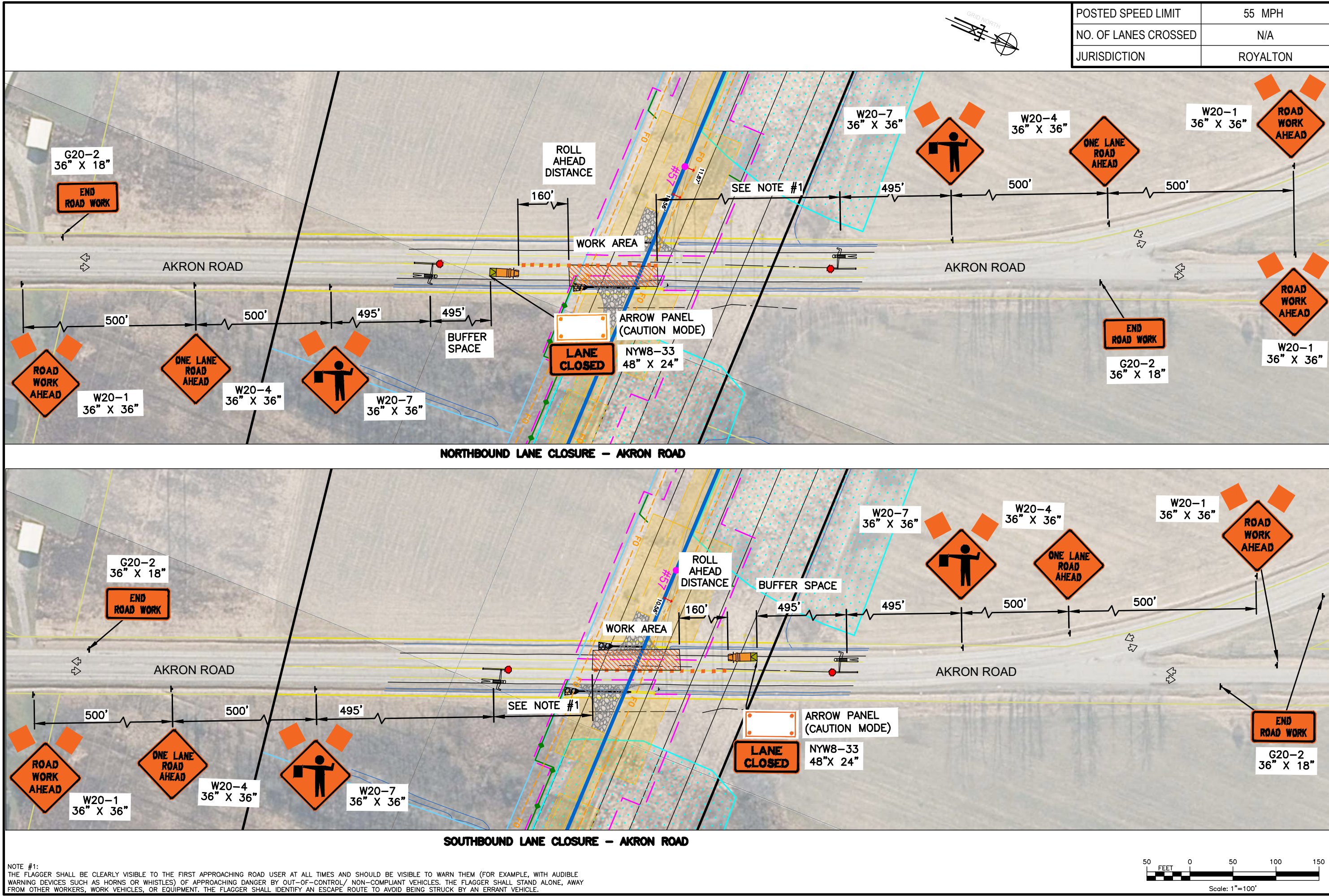
NOTE #1:
THE FLAGGER SHALL BE CLEARLY VISIBLE TO THE FIRST APPROACHING ROAD USER AT ALL TIMES AND SHOULD BE VISIBLE TO WARN THEM (FOR EXAMPLE, WITH AUDIBLE WARNING DEVICES SUCH AS HORNS OR WHISTLES) OF APPROACHING DANGER BY OUT-OF-CONTROL/ NON-COMPLIANT VEHICLES. THE FLAGGER SHALL STAND ALONE, AWAY FROM OTHER WORKERS, WORK VEHICLES, OR EQUIPMENT. THE FLAGGER SHALL IDENTIFY AN ESCAPE ROUTE TO AVOID BEING STRUCK BY AN ERRANT VEHICLE.



POSTED SPEED LIMIT	55 MPH
NO. OF LANES CROSSED	N/A
JURISDICTION	TOWN OF LOCKPORT

PERSONAL ISSUE DATE	6/06/2025	TRAFFIC MANAGEMENT PLAN	PREPARED BY	DES.	APPROVED	TW	APPROVED	FISHER	APPROVED	TL	APPROVED	SM	APPROVED	NO.	DATE
FILE INDEX	6.1-L10-M5	LOCKPORT-BATAVIA 112	ACCOUNT NUMBER												
DRAWING NUMBER	L1-41568	REBUILD PROJECT													
SUPER	TCP-110	TCP PLAN - OAK LANE													

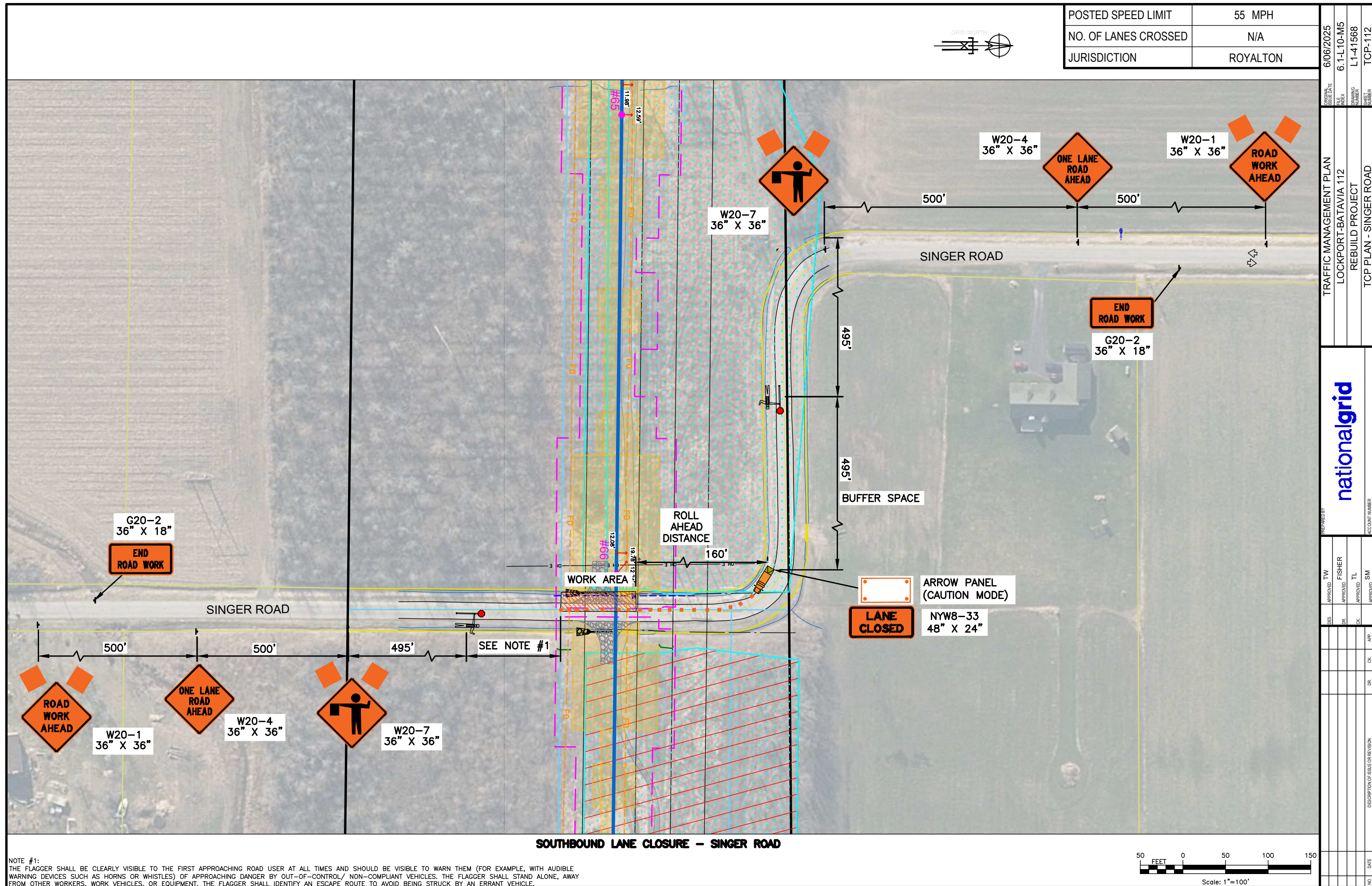
nationalgrid

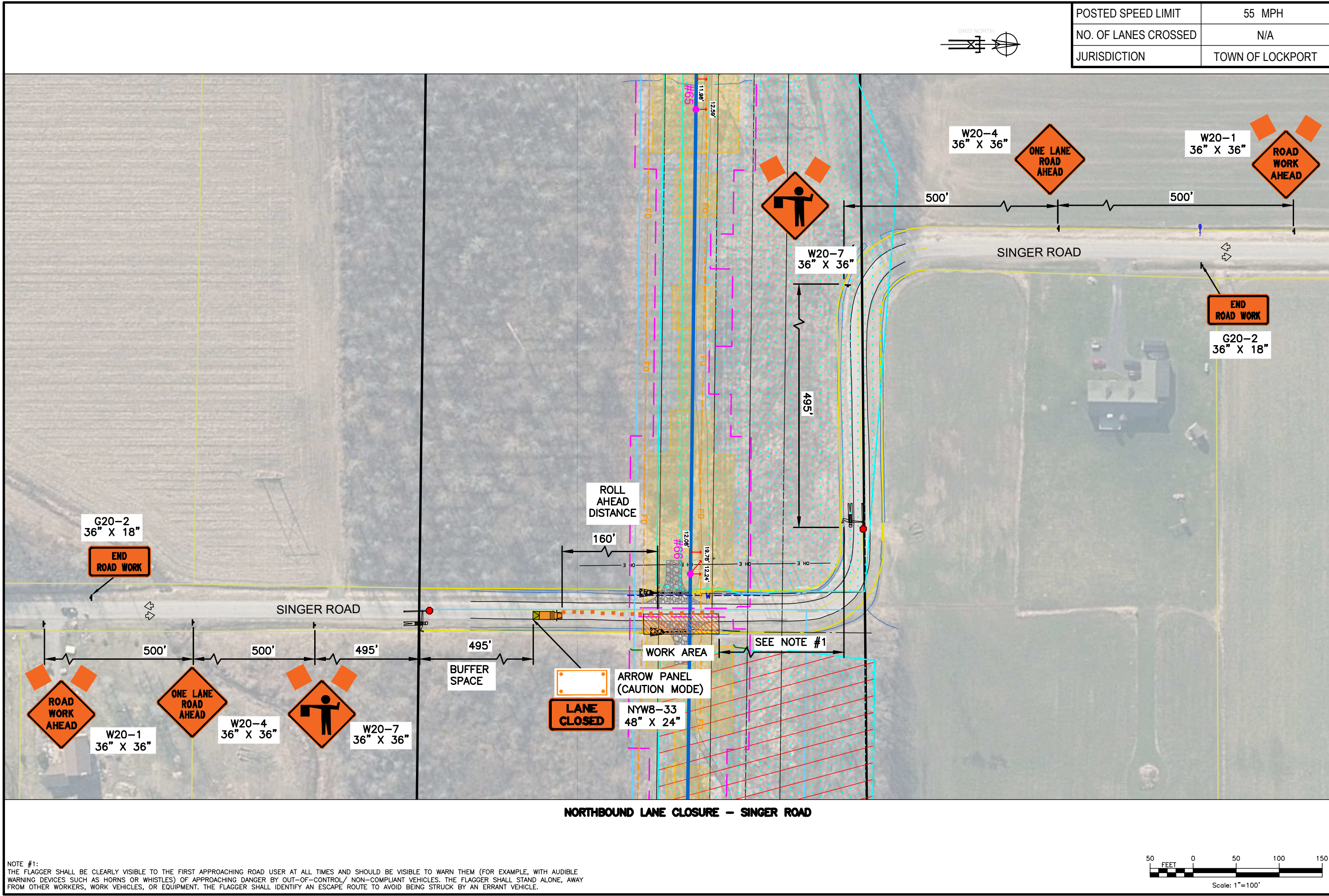


POSTED SPEED LIMIT	55 MPH
NO. OF LANES CROSSED	N/A
JURISDICTION	ROYALTON

ISSUE DATE	6/06/2025	PREPARED BY	TW	APPROVED	DR	CK	APP	NO	DATE
FILE	6.1-L10-M5	DESIGNED	FISHER	APPROVED	DR	CK	APP		
DRAWING NUMBER	L1-41568	TRAFIC MANAGEMENT PLAN	TL	APPROVED	DR	CK	APP		
SUPER	TCP-111	LOCKPORT-BATAVIA 112	SM	APPROVED	DR	CK	APP		
		REBUILD PROJECT							
		TCP PLAN - AKRON ROAD							

nationalgrid





NOTE #1:
THE FLAGGER SHALL BE CLEARLY VISIBLE TO THE FIRST APPROACHING ROAD USER AT ALL TIMES AND SHOULD BE VISIBLE TO WARN THEM (FOR EXAMPLE, WITH AUDIBLE WARNING DEVICES SUCH AS HORNS OR WHISTLES) OF APPROACHING DANGER BY OUT-OF-CONTROL/ NON-COMPLIANT VEHICLES. THE FLAGGER SHALL STAND ALONE, AWAY FROM OTHER WORKERS, WORK VEHICLES, OR EQUIPMENT. THE FLAGGER SHALL IDENTIFY AN ESCAPE ROUTE TO AVOID BEING STRUCK BY AN ERRANT VEHICLE.

POSTED SPEED LIMIT	55 MPH
NO. OF LANES CROSSED	N/A
JURISDICTION	TOWN OF LOCKPORT

TRAFFIC MANAGEMENT PLAN	PREPARED BY	DES.	APPROVED	TW	FILE	ISSUE DATE
LOCKPORT-BATAVIA 112	FISHER	DR.	APPROVED		6.1-L-10-M5	6/06/2025
REBUILD PROJECT	TL	CK	APPROVED		L1-41568	
TCP PLAN - SINGER ROAD	SM	DR.	APPROVED		TCP-113	
	DESCRIPTION OF ISSUE OR REVISION	NO.	DATE	APP.		